

Introductory Information Sheet

Alcoa Proposed mining expansion

ALCOA

Has submitted a proposal for mining expansion called the **Pinjarra Alumina Refinery Revised Proposal** to the Environmental Protection Authority (EPA) OF WA.



ALCOA INTENDS TO DO 3 THINGS:

1

Increase the Alumina production at the Pinjarra refinery and **extend tailings ponds**.

2

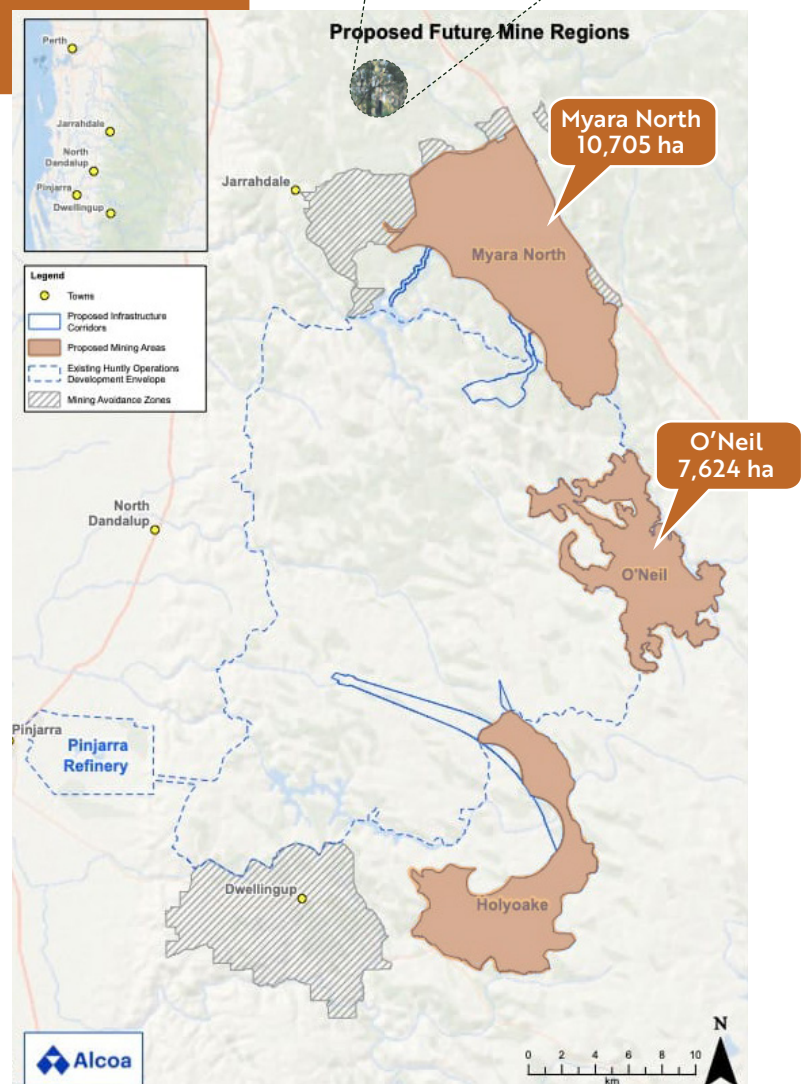
Extend mining at Huntly Mine into **Myara North, Holyoake and O'Neil**

3

Clear **6,700 Ha (16,000 acres)** of forest and **10-Ha (24 acres)** of vegetation at the refinery.

HAVE YOUR SAY

by signing on to WA Forest Alliance's submission with a quick and simple form or find out more about writing your own at endforestmining.org.au/alcoa. The comment period is now open and closes on 21 August 2025.



OUR CONCERNS

1. **The mining at Holyoake could be as close as 6-7 kms from the Dwellingup town centre.**
(Alcoa Community update October 2024). This has the potential to impact significantly on locals and visitors, especially those attracted to Dwellingup for the peaceful lifestyle and nature-based eco-tourism experiences.
2. When making environmental decisions there are **3 principles** to think about.
 1. **Precautionary principle ('if in doubt don't do it!')** - DDFD considers that there is too much doubt about the long-term effects of past and future bauxite mining to support this mining expansion.
 2. **Cumulative impact (long term effects)** – The mining has been growing at a much greater rate than ever anticipated in 1961 when the Alcoa State agreement was legislated.
 - a. The effects on the Jarrah forest have been enormous, especially as the early rehabilitation was very poorly done with non-WA species
 - b. Difficult to grow species such as Grasstrees, Snottygobblers and Bracken fern are not easily regrown.
 - c. Rehabilitation success at 35 years is poor (2 stars out of 5)¹.
 3. **Intergenerational impact (what will happen in the future)**- with a drying and warming climate DDFD considers that the risks are too great, with concerns about whether a functional forest system can ever be fully replaced once it is destroyed- with effects on plants, animals, air and water quality, and greenhouse gas emissions.

For these reasons the DDFD believes that Alcoa's mining proposal for expansion of mine sites (Holyoake, Myara and O'Neil) and Pinjarra refinery should be rejected by the EPA.

Have your say by signing on to WA Forest Alliance's submission with a quick and simple form or find out more about writing your own at endforestmining.org.au/alcoa.

The comment period is now open and closes on 21 August 2025.

The DDFD have developed a series of information sheets to support our concerns. These information sheets focus on various aspects of the environment likely to be impacted by bauxite mining, and the proposed mining expansion. These include: Rehabilitation, Fauna, Flora, Soil, Water, Air Quality, and Greenhouse Gas Emissions.

Reference

1. Campbell et al. Standards-based evaluation inform ecological restoration outcomes for a major mining activity in a global biodiversity hot spot. Restoration Ecology 2024-11, Vol 32(8) p.n/a, Article e14236