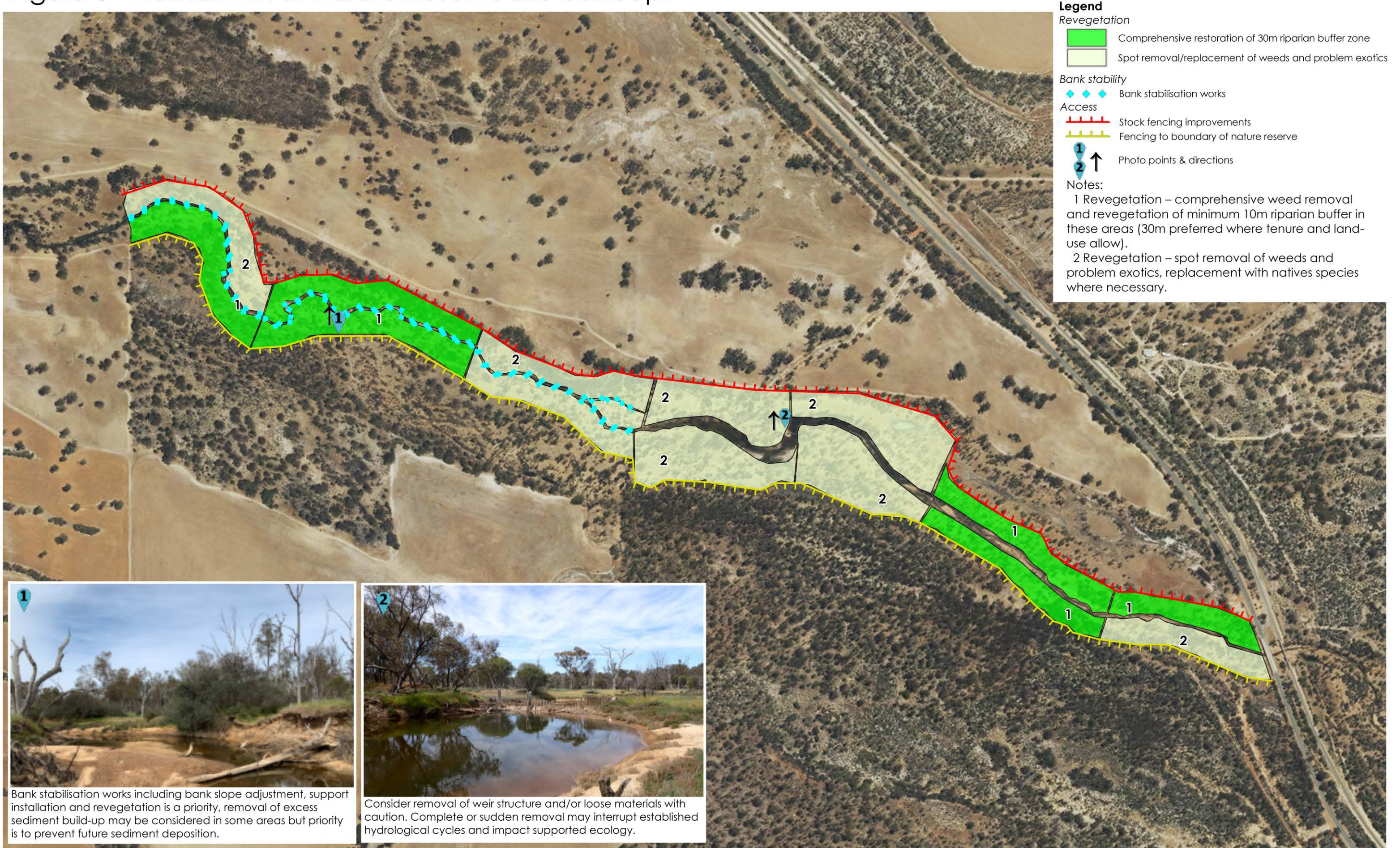


Peel Harvey Catchment Council - Hotham-Williams River Action Plan

Figure 5 - Hotham River Nature Reserve site concept



*©2021. While Urbaqua has taken care to ensure the accuracy of this product, Urbaqua and client make no representations or warranties about its accuracy, completeness or suitability for any particular purpose. Urbaqua and client cannot accept liability of any kind (whether in contract, tort or otherwise) for any expenses, losses, damages and/or costs (including indirect or consequential damage) which are or may be incurred as a result of the product being inaccurate, incomplete or unsuitable in any way and for any reason.
Data source: PHCC. Created by:YY Projection: MGA: zone 50.



Scale 1:6,000

@ A3