

# Serpentine River Action Plan - Reach Map



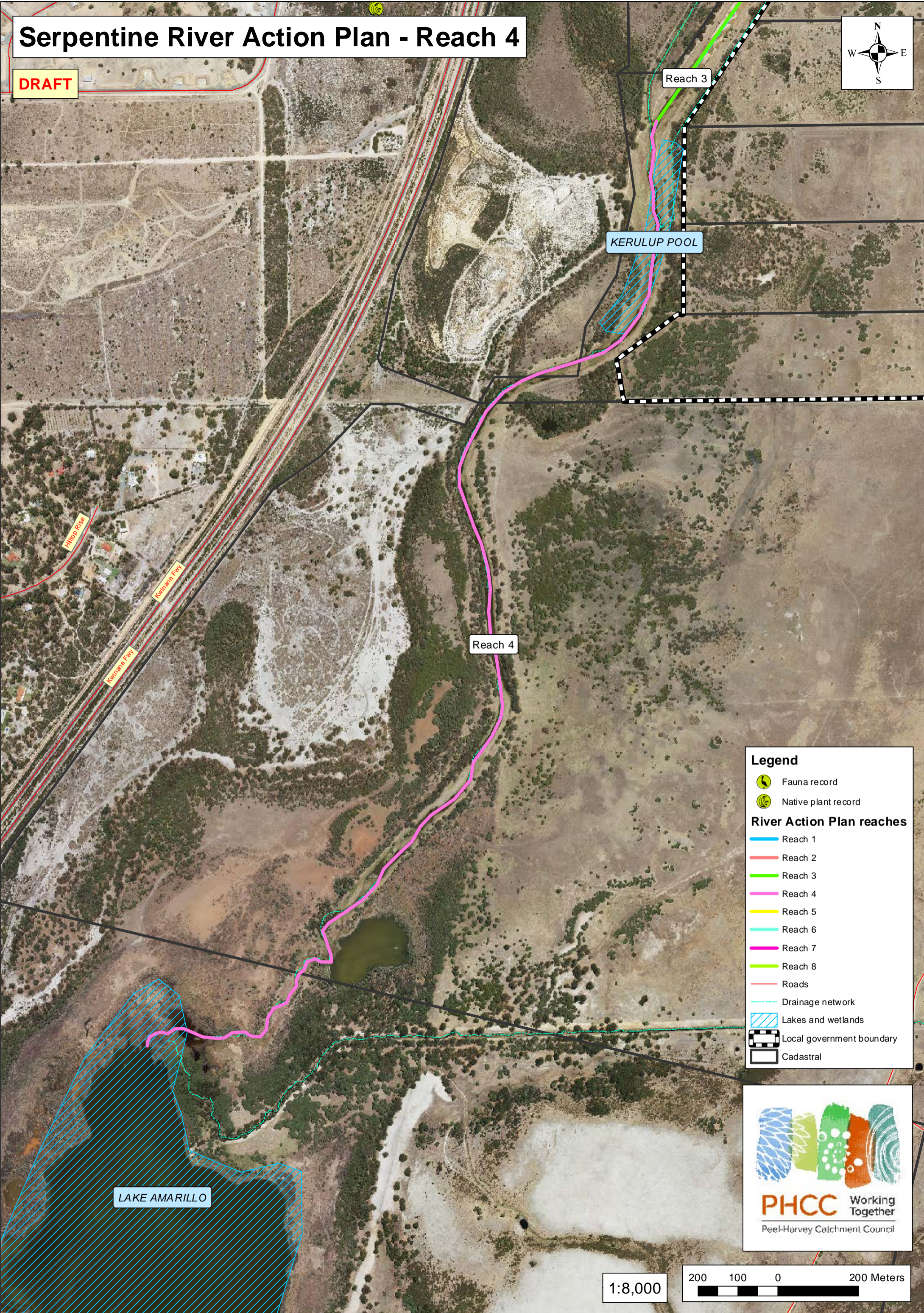
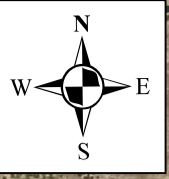
REACH NOTES	
<b>Reach 1</b>	Start: Lowlands Reserve Finish: Confluence with Birrega Main Drain Thalweg* length: 5 km Characteristics: Natural meandering channel. Good bank vegetation.
<b>Reach 2</b>	Start: Birrega Main Drain Finish: Kamrup Road Thalweg length: 5.2 km Characteristics: Constructed drain with scatted bank vegetation.
<b>Reach 3</b>	Start: Kamrup Road Finish: Inlet from floodplain wetland (Kerulup Pool) Thalweg length: 4.3 km Characteristics: Drain with no bank vegetation.
<b>Reach 4</b>	Start: Kerulup Pool Finish: Lake Amarillo Thalweg length: 3.1 km Characteristics: Meandering drain / natural channel at downstream end. Scatted bank vegetation.
<b>Reach 5</b>	Start: Lake Amarillo Finish: Wetland system Thalweg length: 5.3 km Characteristics: Meandering channel. Vegetation cover variable.
<b>Reach 6</b>	Start: Wetland system Finish: Yalbanberup Pool Thalweg length: 3.1 km Characteristics: Estuarine
<b>Reach 7</b>	Start: Yalbanberup Pool Finish: Goegrup Lake Thalweg length: 3.7 km Characteristics: Estuarine
<b>Reach 8</b>	Start: Goegrup Lake Finish: Estuary outlet Thalweg length: 8.2 km Characteristics: Estuarine

\*Thalweg definition:  
The line along a river channel or valley that follows the lowest point i.e. in a river, a line that follows the deepest part of the channel.



# Serpentine River Action Plan - Reach 4

DRAFT



**Legend**

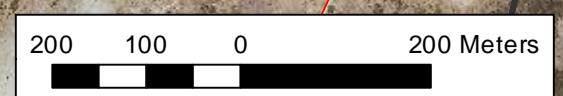
- Fauna record
- Native plant record

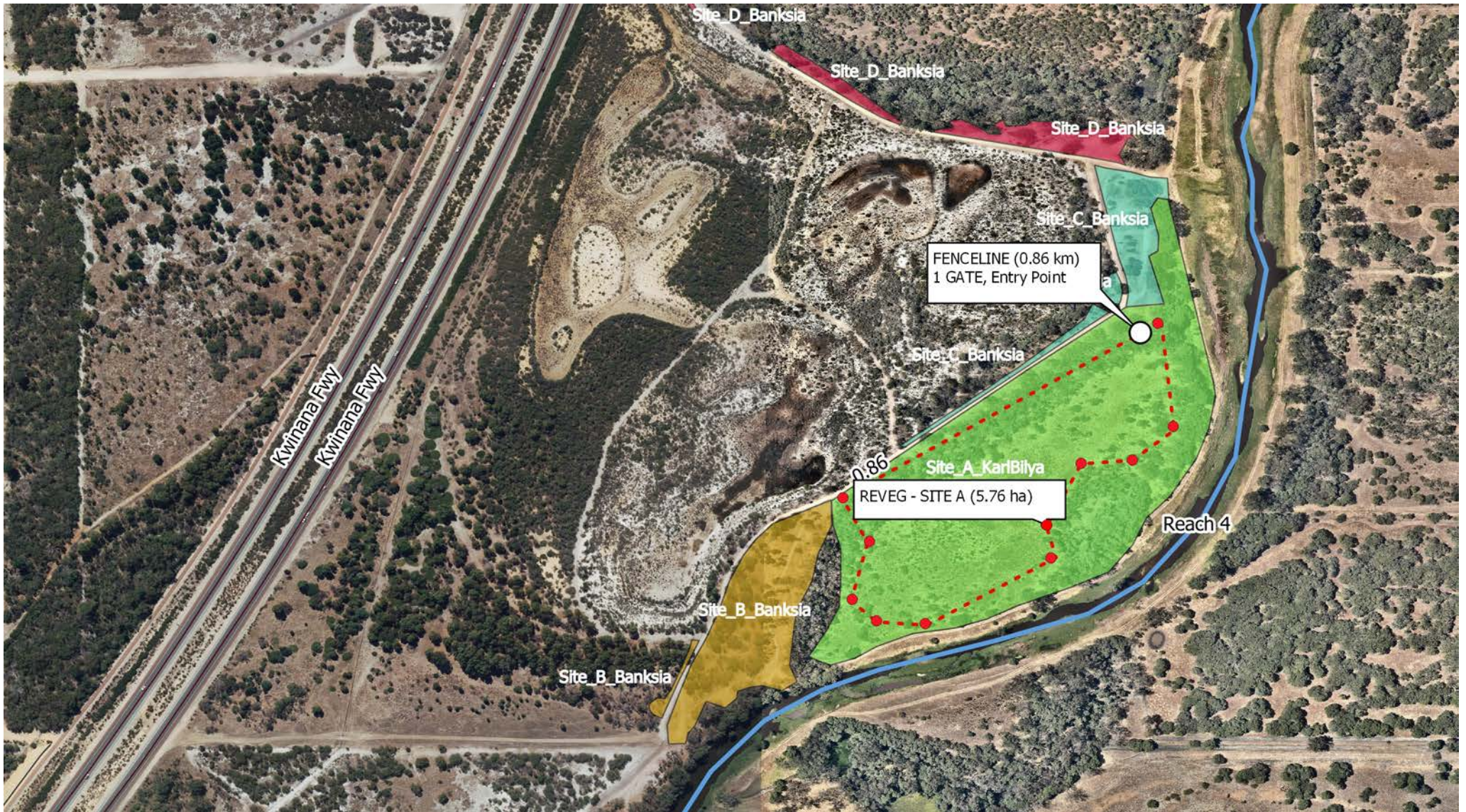
**River Action Plan reaches**

- Reach 1
- Reach 2
- Reach 3
- Reach 4
- Reach 5
- Reach 6
- Reach 7
- Reach 8
- Roads
- Drainage network
- Lakes and wetlands
- Local government boundary
- Cadastral



1:8,000





0 50 100 150 200 250 m



Legend

- Karu Bilya Wetlands Restoration Site**
- SiteA\_strainer\_posts\_existing\_20200403
  - - - Fenceline\_DMIR\_site
  - phcc\_rcl\_20150720
  - Karu\_Bilya\_Site\_5500AF
  - Site\_A\_KarlBilya

Alcoa Foundation - Karu Bilya Phase 1 (2020)