

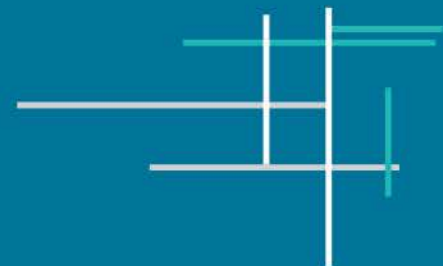


Government of Western Australia
Department of Water and Environmental Regulation

Peel region water use and availability

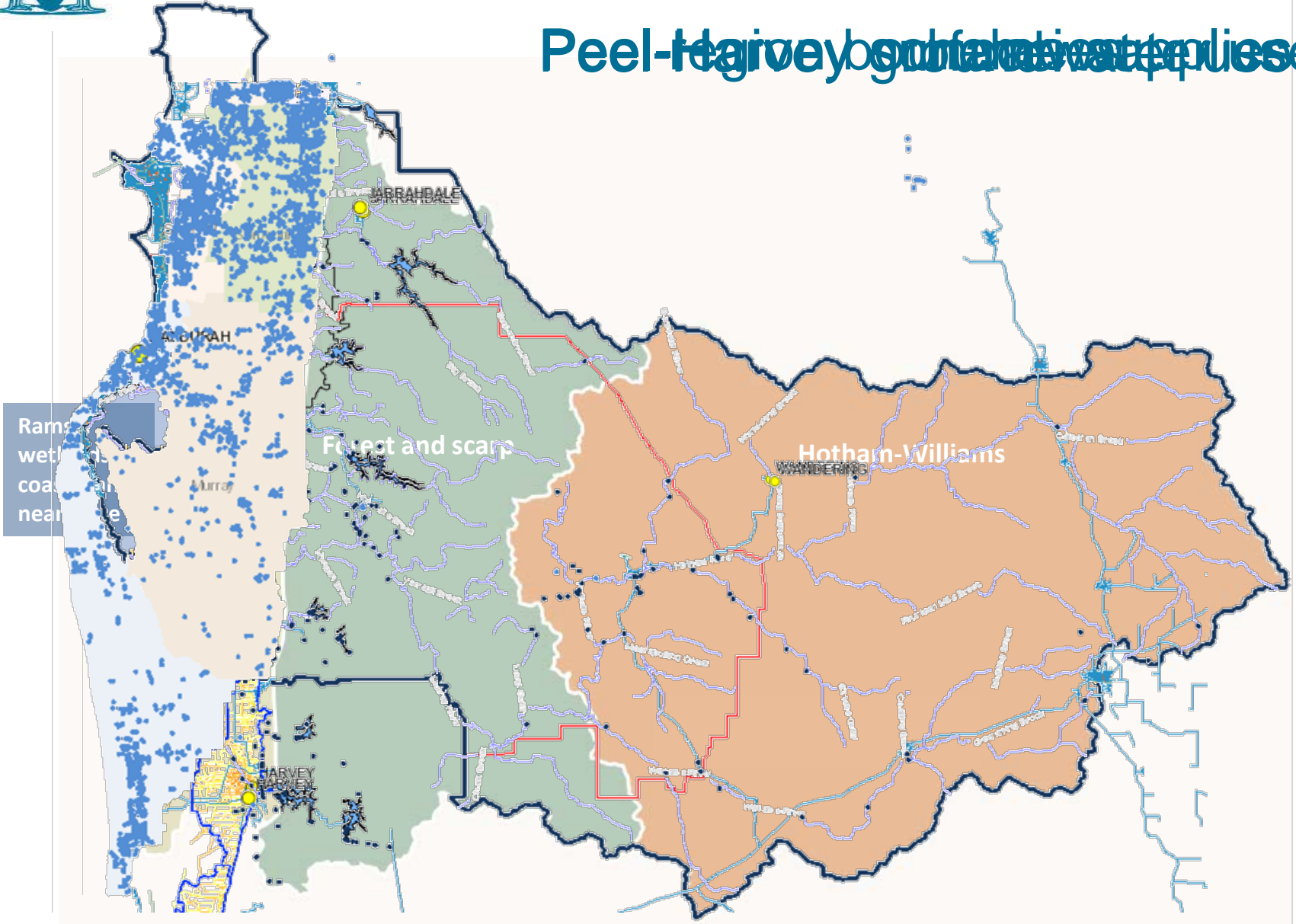
Peel Harvey Catchment Council – strategic meeting
February 20 2020

Dan Ferguson (Principal Water Planner, Water Supply Planning)



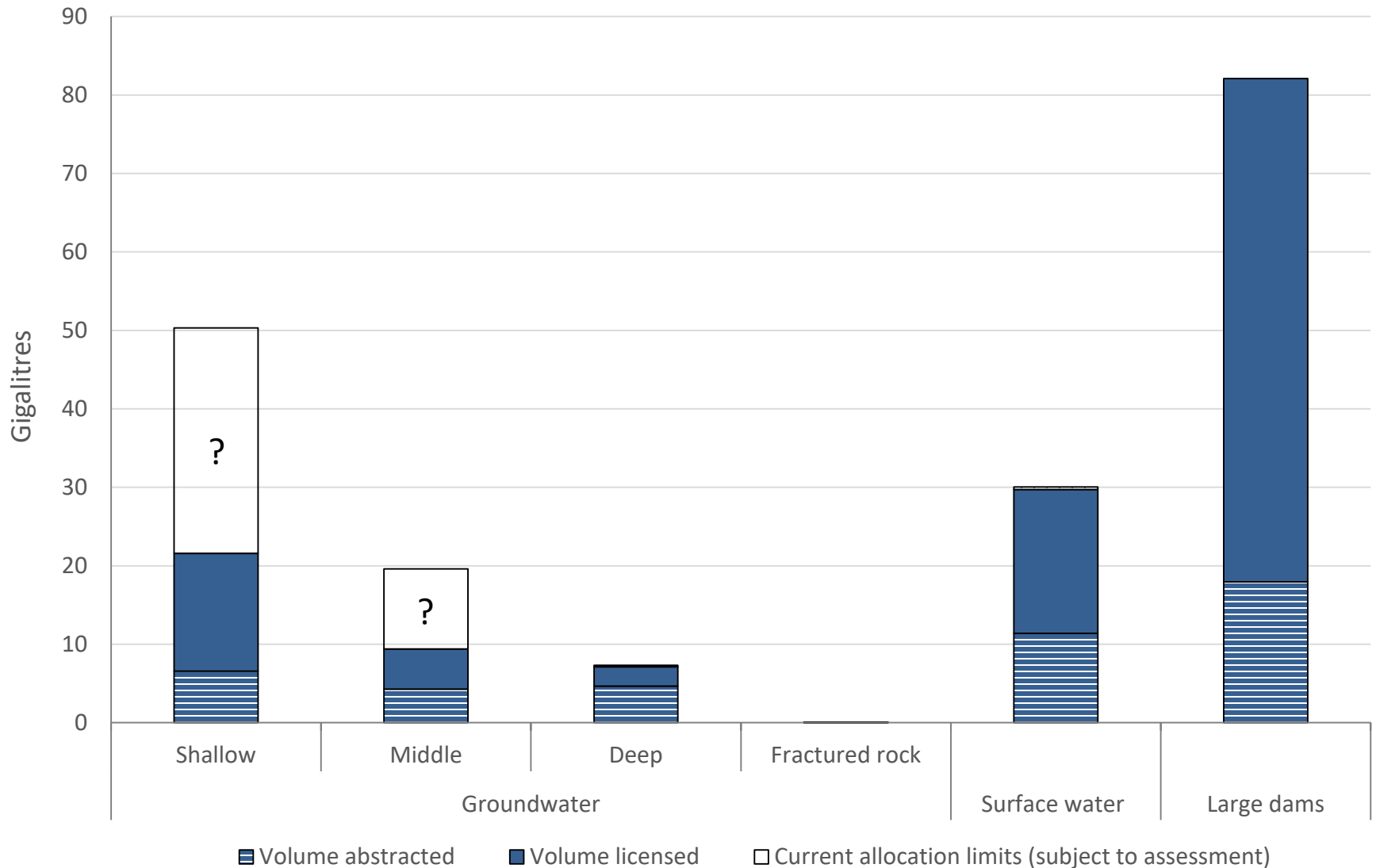


Peel-Harvey groundwater supplies



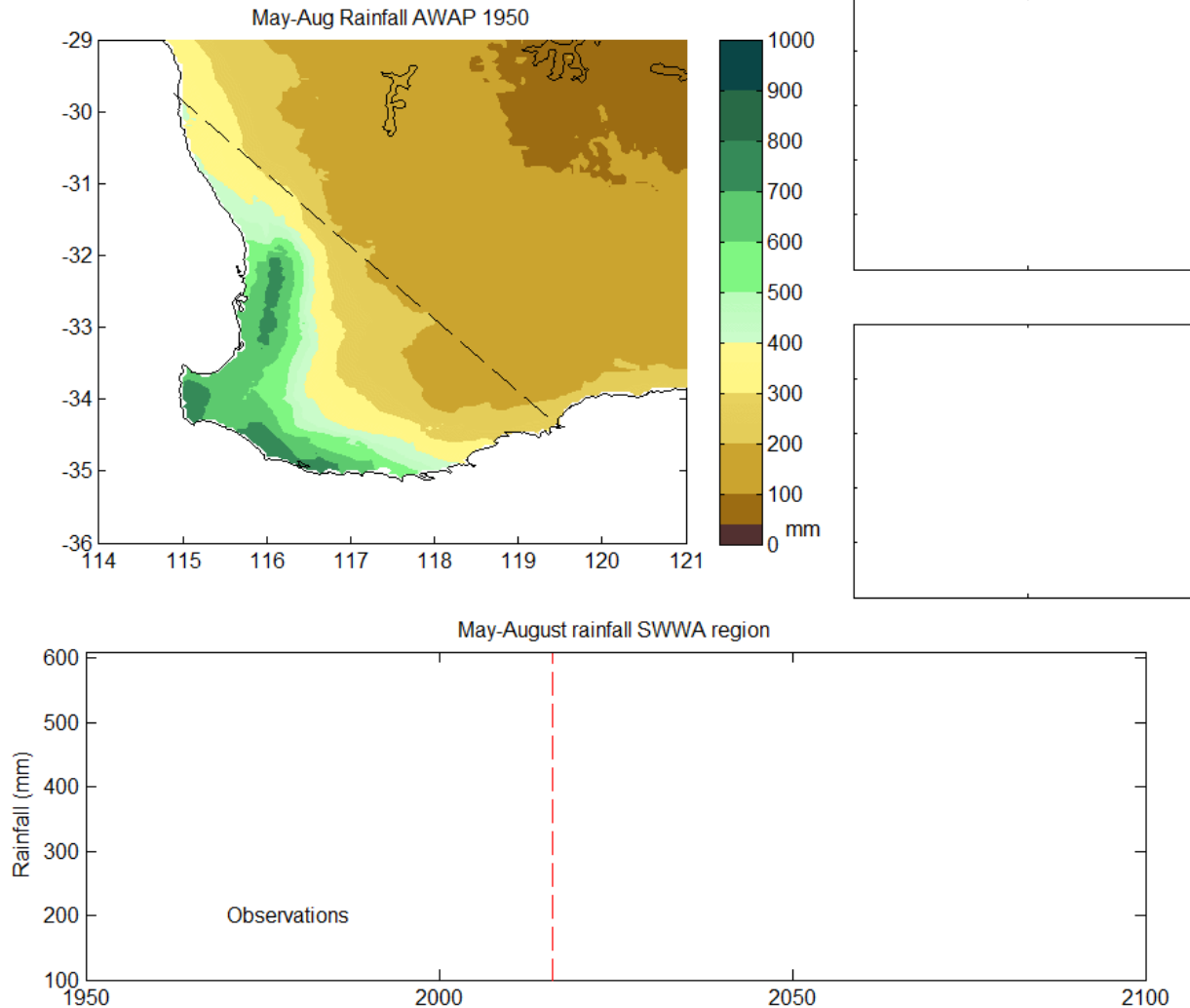


Water availability in the Peel region



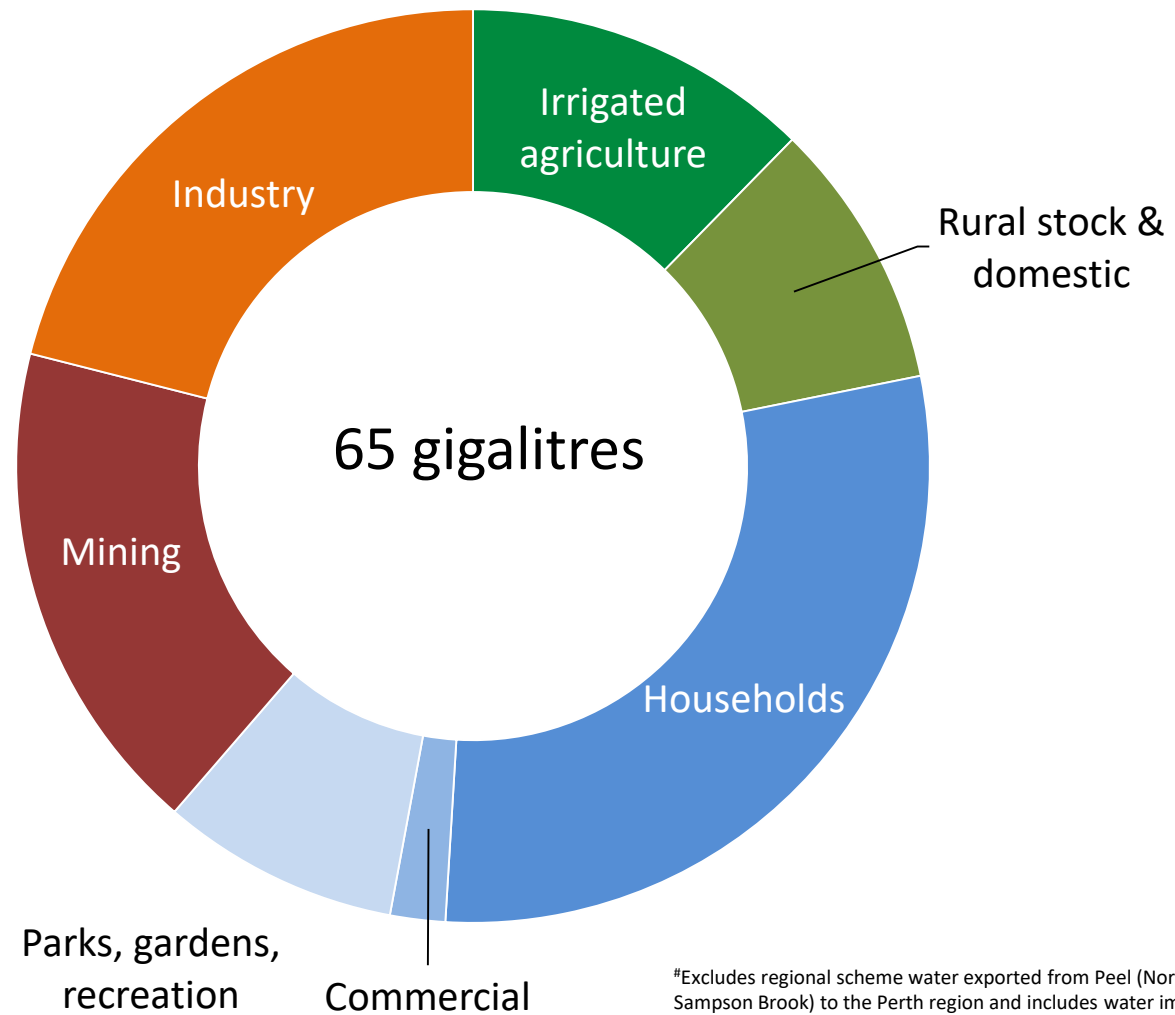


May-Aug rainfall projections





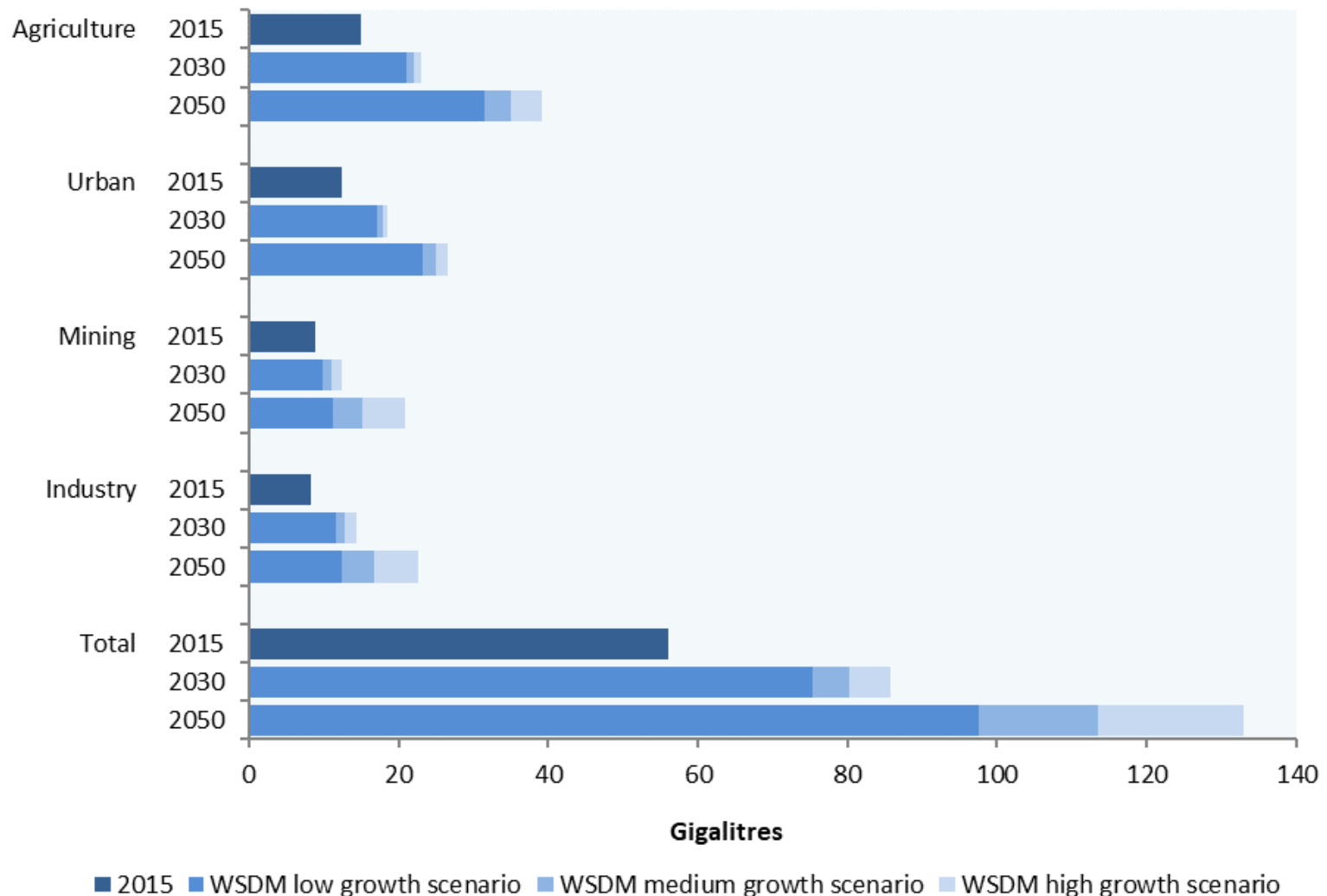
Water use in the Peel region



*Excludes regional scheme water exported from Peel (North and South Dandalup, Sampson Brook) to the Perth region and includes water imported from the Southern Seawater Desalination Plant at Binningup



Projected water demand in the Peel region





Building water security



Sustainable
groundwater and surface water
resources



Efficient
water use and innovations for a drying
climate

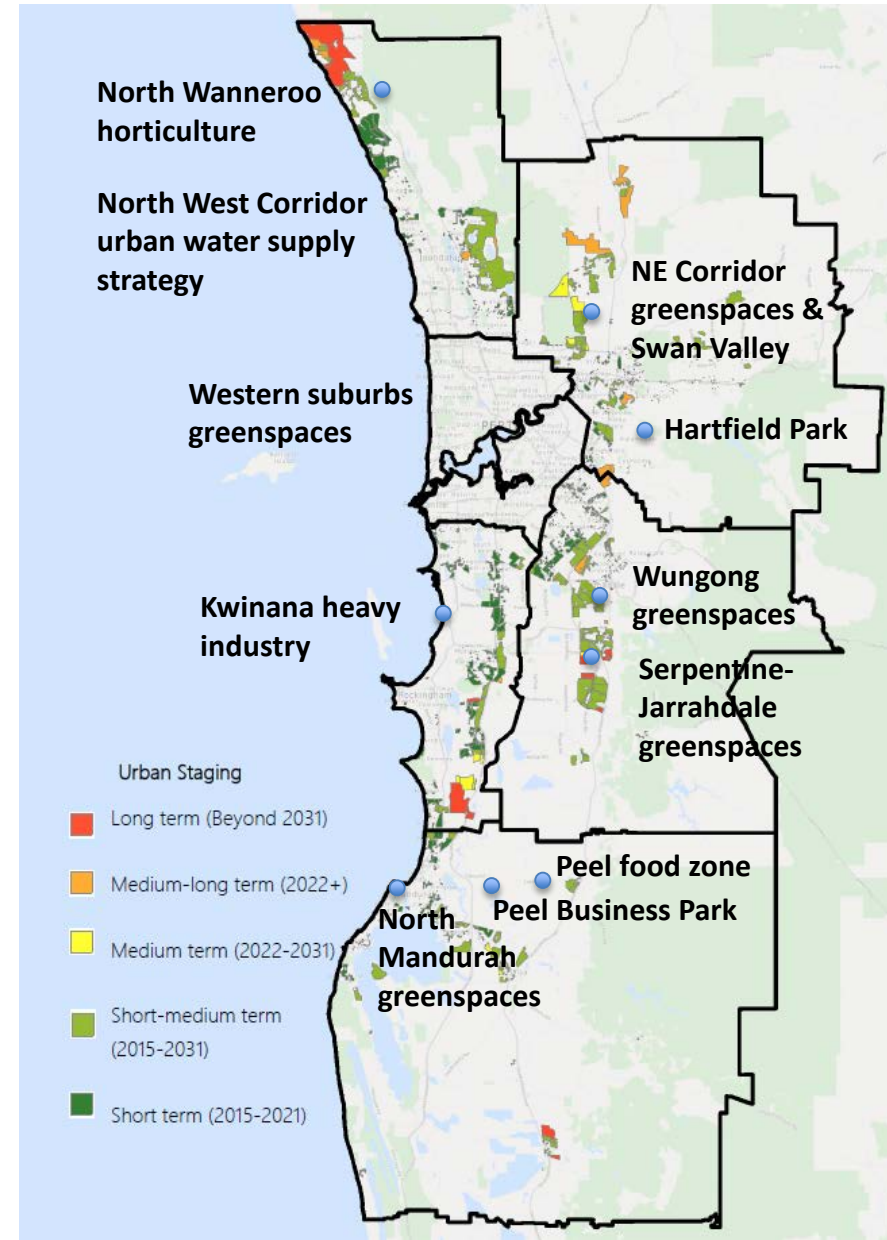
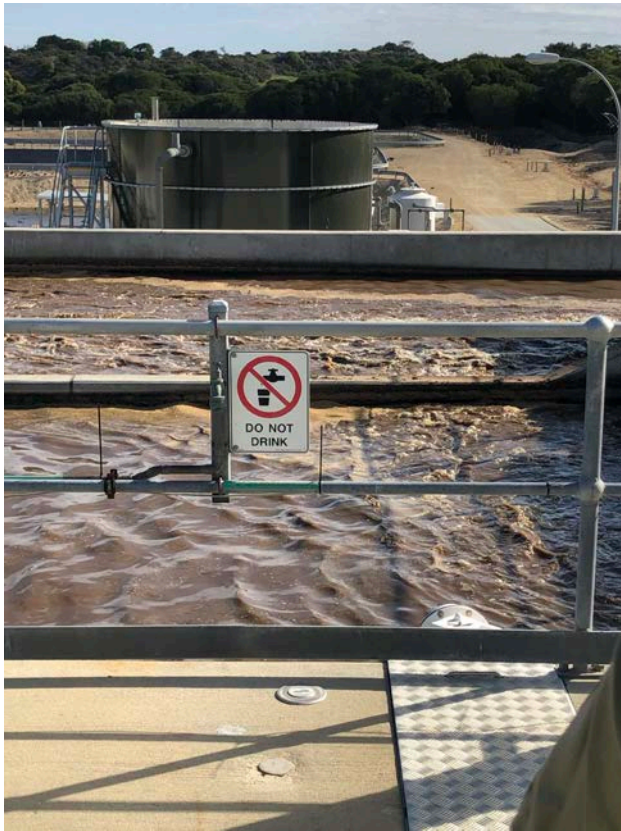


Secure
new water sources and supplies for
future growth





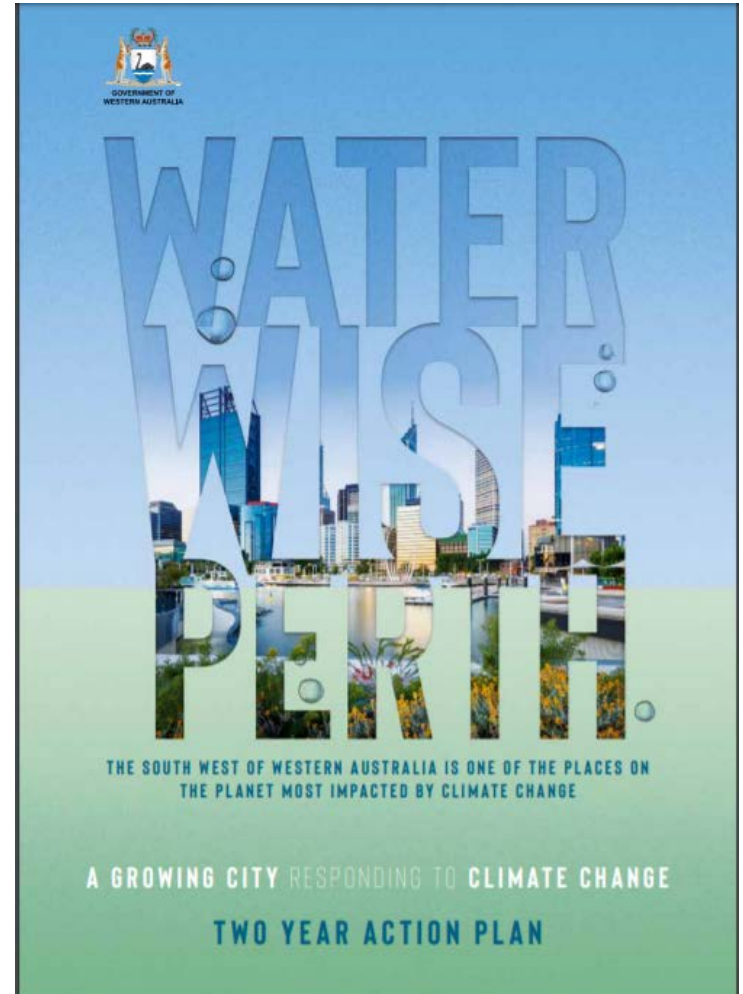
Non-potable water supply investigations





Water science and planning

Peel Integrated Water Initiative





Key messages

- Most high-quality, well located and relatively inexpensive water sources are fully allocated in the Peel region. The volume of water currently available in the Murray and Serpentine groundwater areas will likely reduce.
- Building water security means optimising the use of available groundwater and surface water, redesigning how water is used and finding alternative, climate-resilient sources.
- The Peel Integrated Water Initiative is a series of investigations that will help guide sustainable water resource management for the region's economic growth.
- Waterwise Perth has 38 actions to manage the impacts of climate change on water resources and urban liveability. The aim is for Perth to be a leading waterwise city by 2030.