

# Collaborative Management Framework for the Peel-Harvey Estuary



## Issue

The Peel-Harvey Estuary, Rivers and waterways are in very poor health and research is showing that without a transformational approach to their management, further reduction in rainfall and streamflow will see the system collapse, taking with it an estimated \$3.35 billion of economic value to the Region. Actions identified for the management of the waterways in the Strategic Assessment for Perth and Peel and the pending Peel-Harvey Estuary Protection Plan, need to be implemented now, including legislative changes putting the restoration of the health of the system as a Regional priority.

## Economic Value of the Peel-Harvey Waterways - \$3.35 billion + p.a.

Preserving the health of the Peel-Harvey waterways is central to local community values and will retain significant economic benefits currently supported through local tourism, commercial fisheries and recreational activities.

## ARC Linkage Research Findings (2019)

The ARC Linkage Research project “Balancing estuarine and societal health in a changing environment” has confirmed the findings of the 2010 Science Strategy for the Peel-Harvey Estuary that ecologically the Estuary and three rivers that flow into it, are all showing

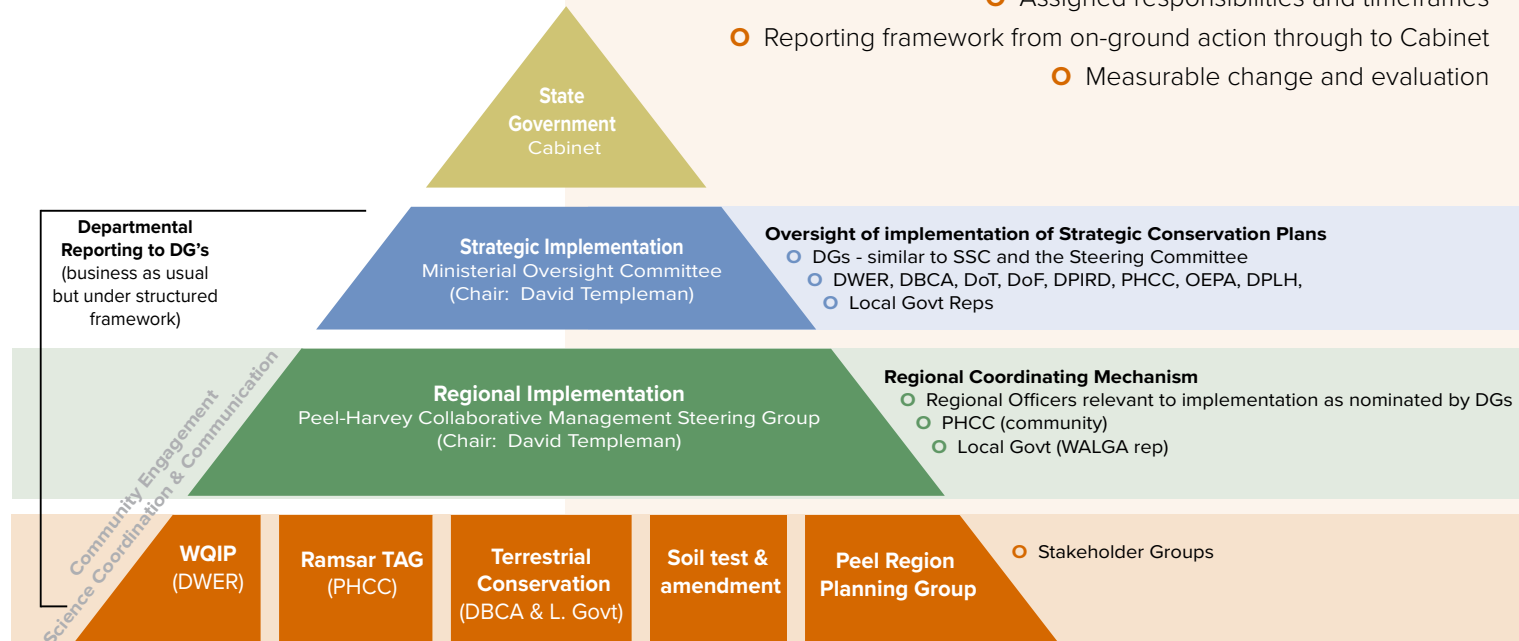
very worrying signs. Our rivers are more salty, our species numbers, abundances are all in decline (with marine species increasing), macroalgae is increasing, toxic sediments are increasing. Trouble hotspots are identified. Future predictions (to 2050) show that a ‘business as usual’ approach in a drying climate will intensify problems.

## Collaborative Management Framework

### 10 Year Program

The Regional and Strategic Implementation Framework would, for the first time, provide a collaborative approach to the management of the Peel-Harvey. Across Government, community and industry this framework would manage the implementation of funding to improve the health of the system with:

- Secured funding for identified activities
- Measurable actions
- Assigned responsibilities and timeframes
- Reporting framework from on-ground action through to Cabinet
- Measurable change and evaluation



## Collaborative Management Timeframes & Deliverables

	2020	2021	2022	2023	2024	2025	2026	2027	2028	2029	2030
Legislative Changes	Governance*		Planning*								
River Restoration Fish Restocking	[Continuous activity from 2020 to 2030]										
Soil Testing Soil Amendment	[Continuous activity from 2020 to 2030]										
Drainage Retrofits & Restoration			[Continuous activity from 2022 to 2030]								
Stormwater Retrofits & Biofilters etc			[Continuous activity from 2022 to 2030]								
Establish & Maintain Environmental Flows		Establish		Maintain							
Noongar Ranger Program	[Continuous activity from 2020 to 2030]										
Monitoring & Analysis	[Continuous activity from 2020 to 2030]										
Collaboration & Administrative	[Continuous activity from 2020 to 2030]										

\* Establish Governance Structure  
\* Planning Structure (SCA & Zoning), Waste Guidelines, EPP & SPP Reviews