

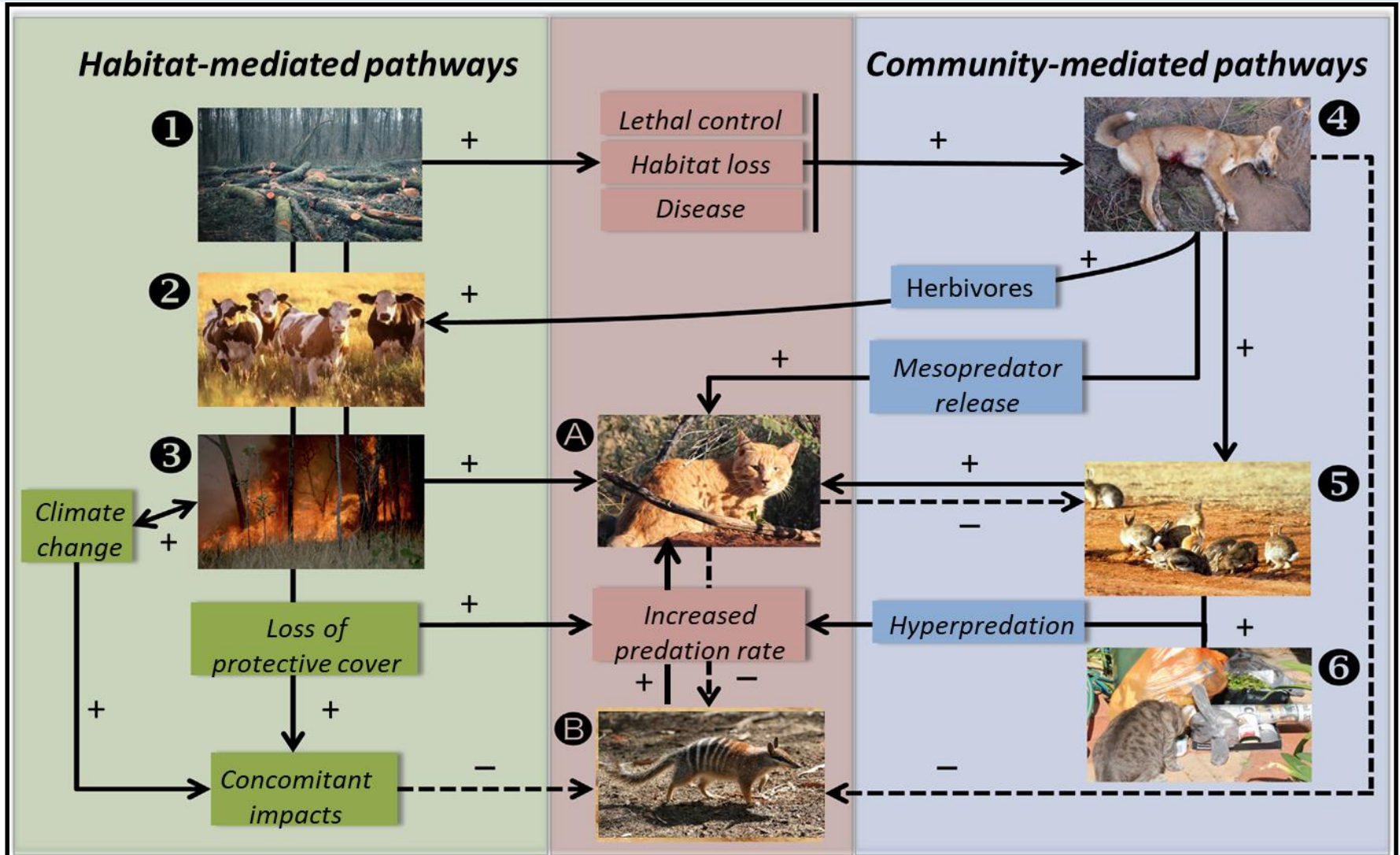
Feral Animal Hotspots and What's Next



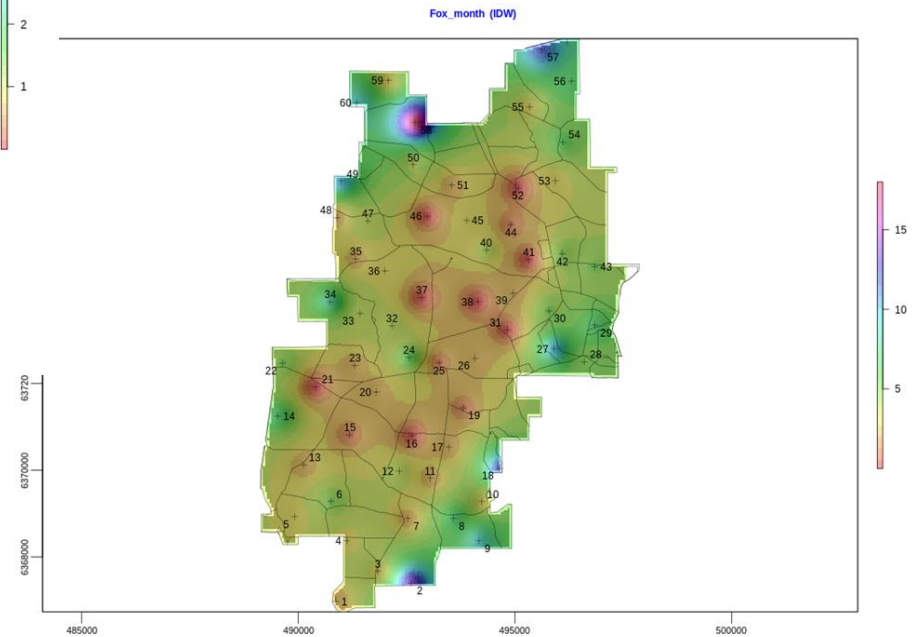
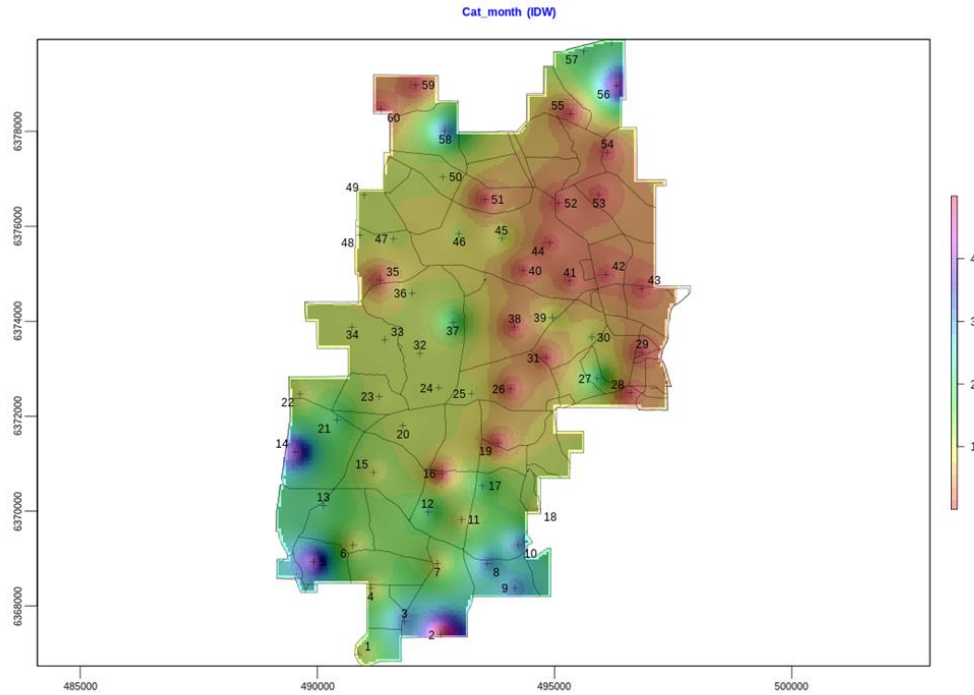
So what is a feral predator hotspot?

It's quite likely that feral predators use preferred pathways when moving through the landscape, however they're comfortable moving in rural and urban environments and will make use of the entire landscape.

Feral predators are highly adaptable and will congregate where food is readily available.



Areas of high activity aren't static and move over time.





Through the Western Shield Program, feral predator control is targeted to reserves containing highly susceptible Threatened Fauna and where there's the greatest chance of successfully protecting populations.

In the Wheatbelt this is complicated by the fragmented nature of remnant vegetation.



2019-05-02 18:02:22

M 1/3

11°C

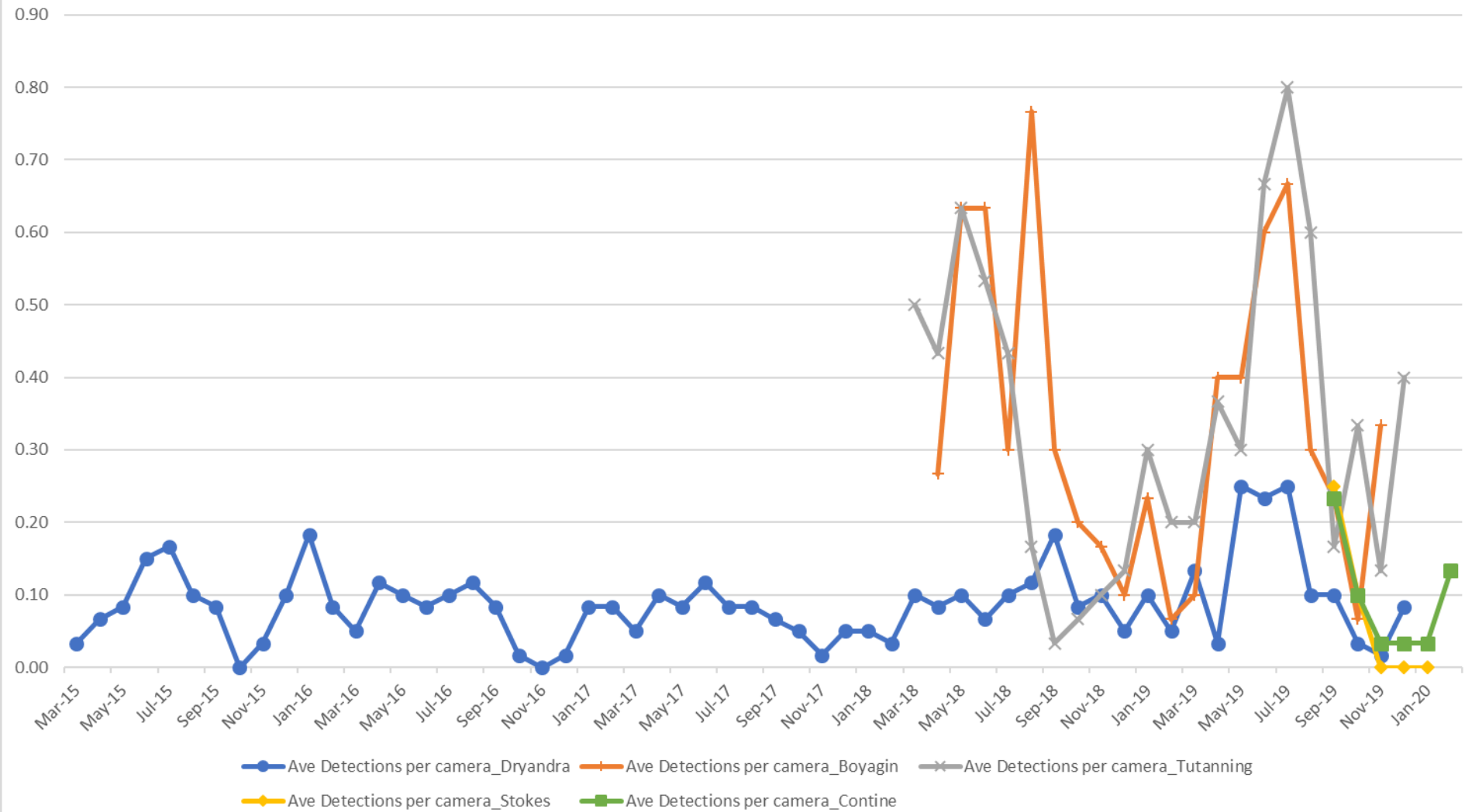


191

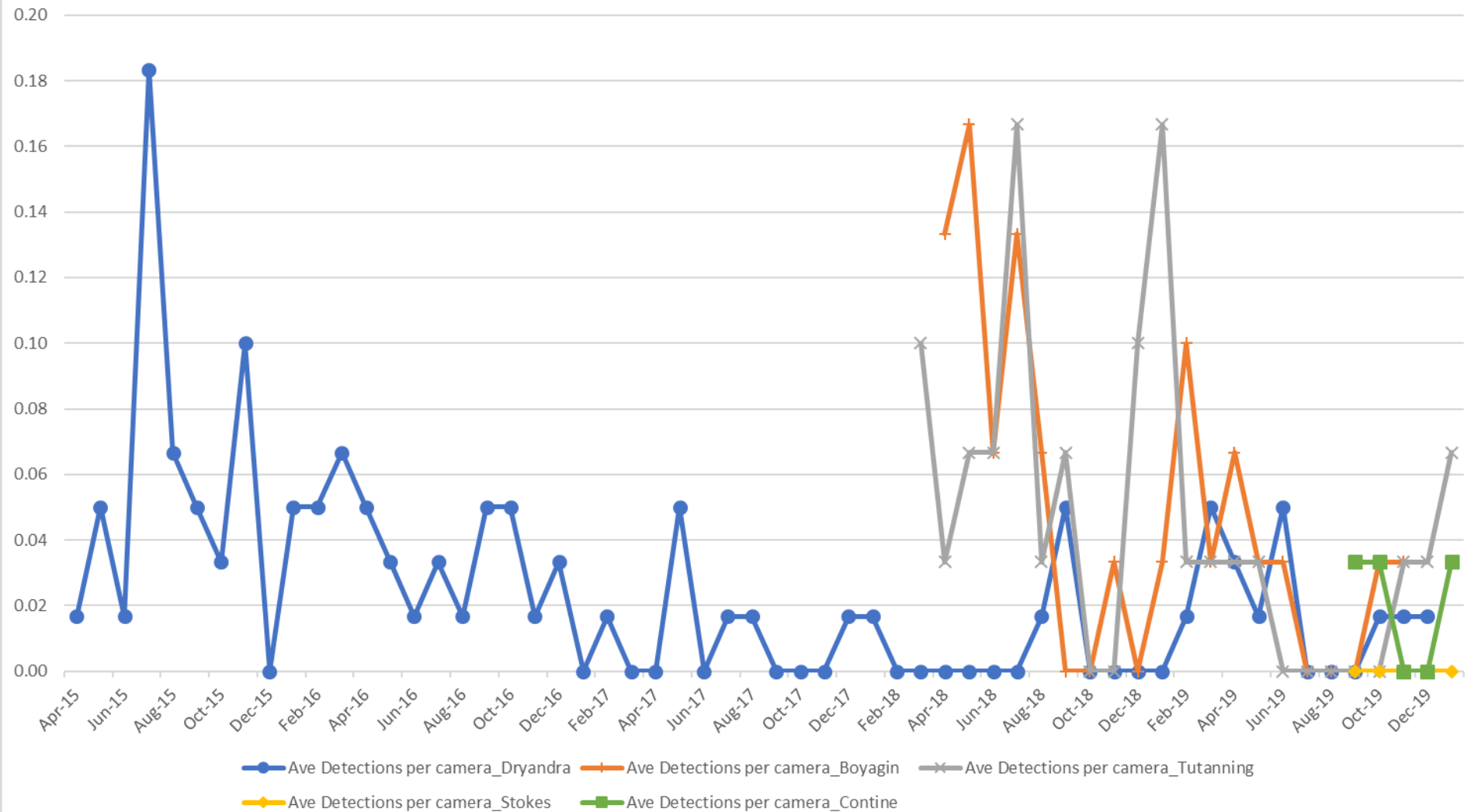
RECONYX



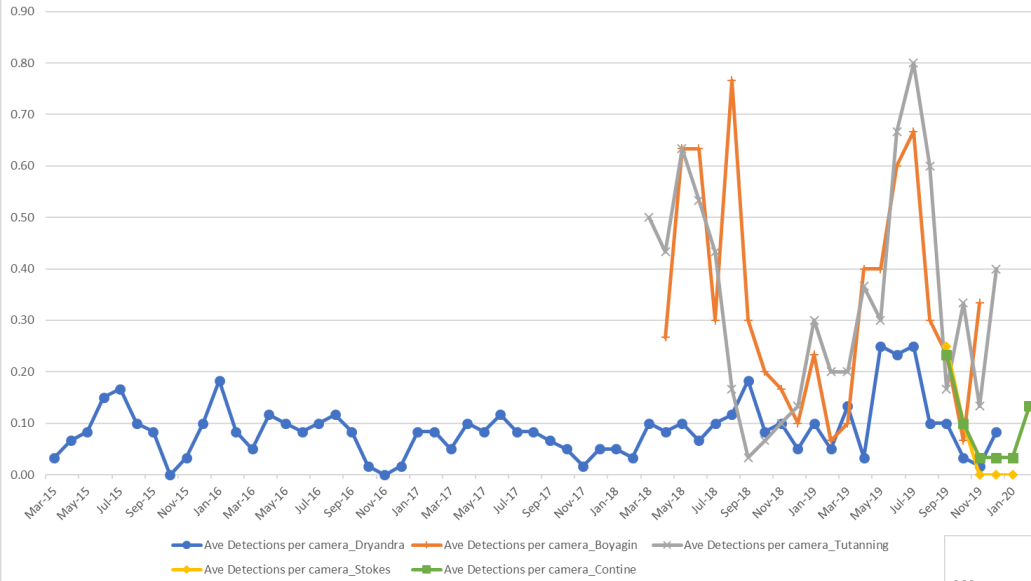
Fox Detections



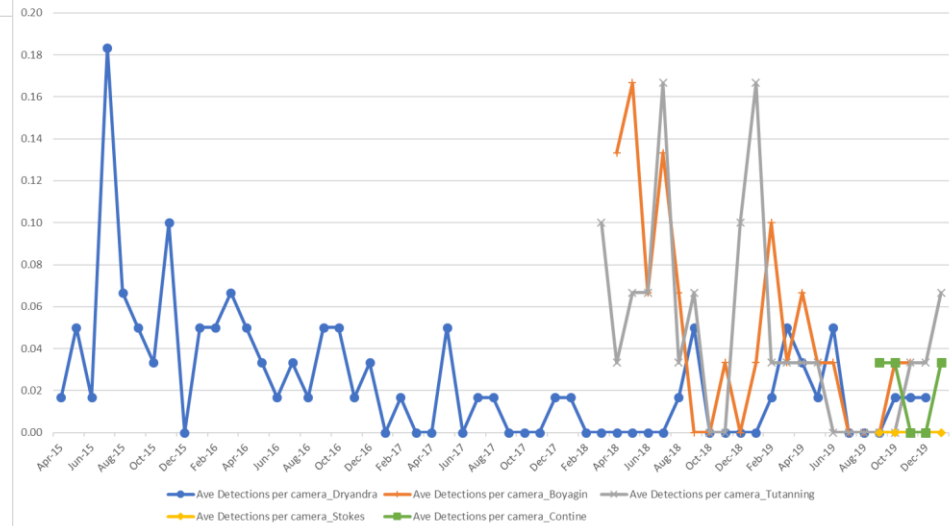
Cat Detections



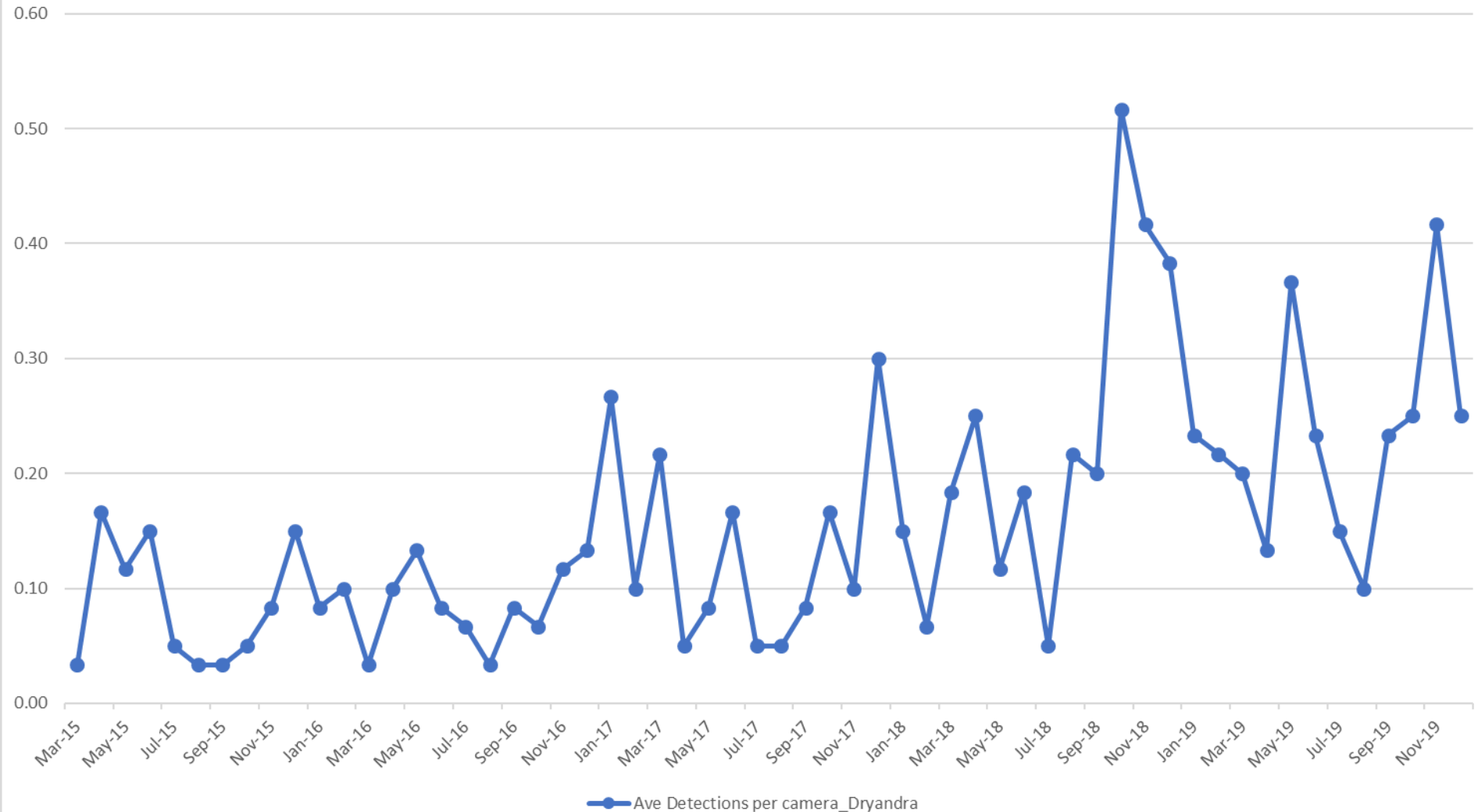
Fox Detections



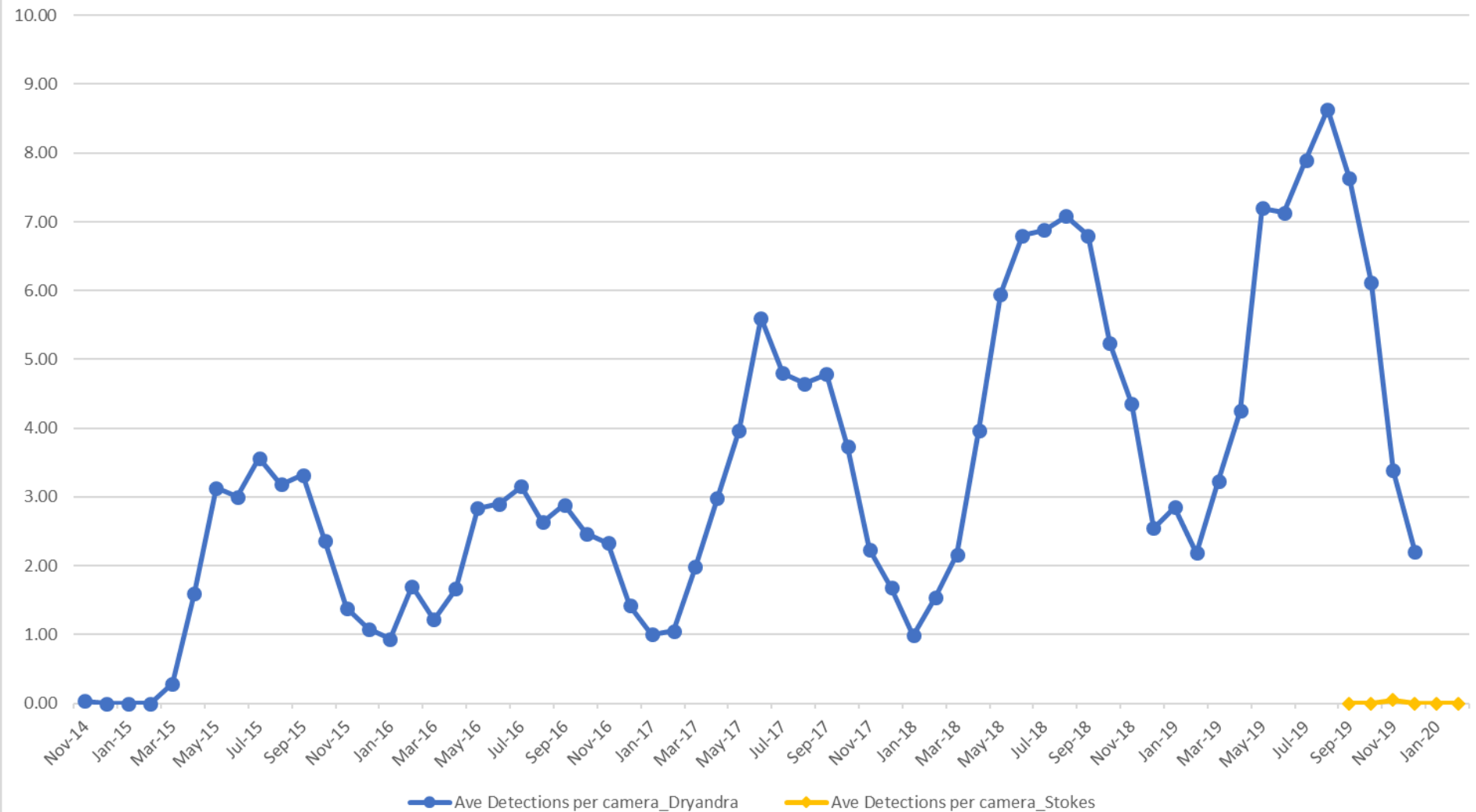
Cat Detections



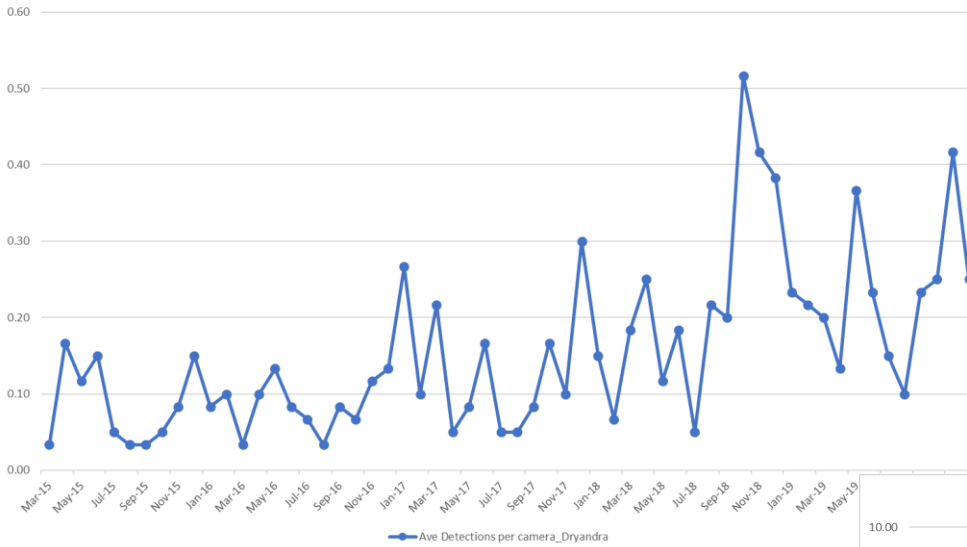
Numbat Detections



Woylie Detections



Numbat Detections



Woylie Detections

