

Cooperative and Joint Management under the SWNT Settlement

and some examples from across the State

Simon Choo – Coordinator (Native Title)

Department of Biodiversity, Conservation and Attractions



Department of **Biodiversity,
Conservation and Attractions**



Working together to conserve country and culture



Working together to care for country



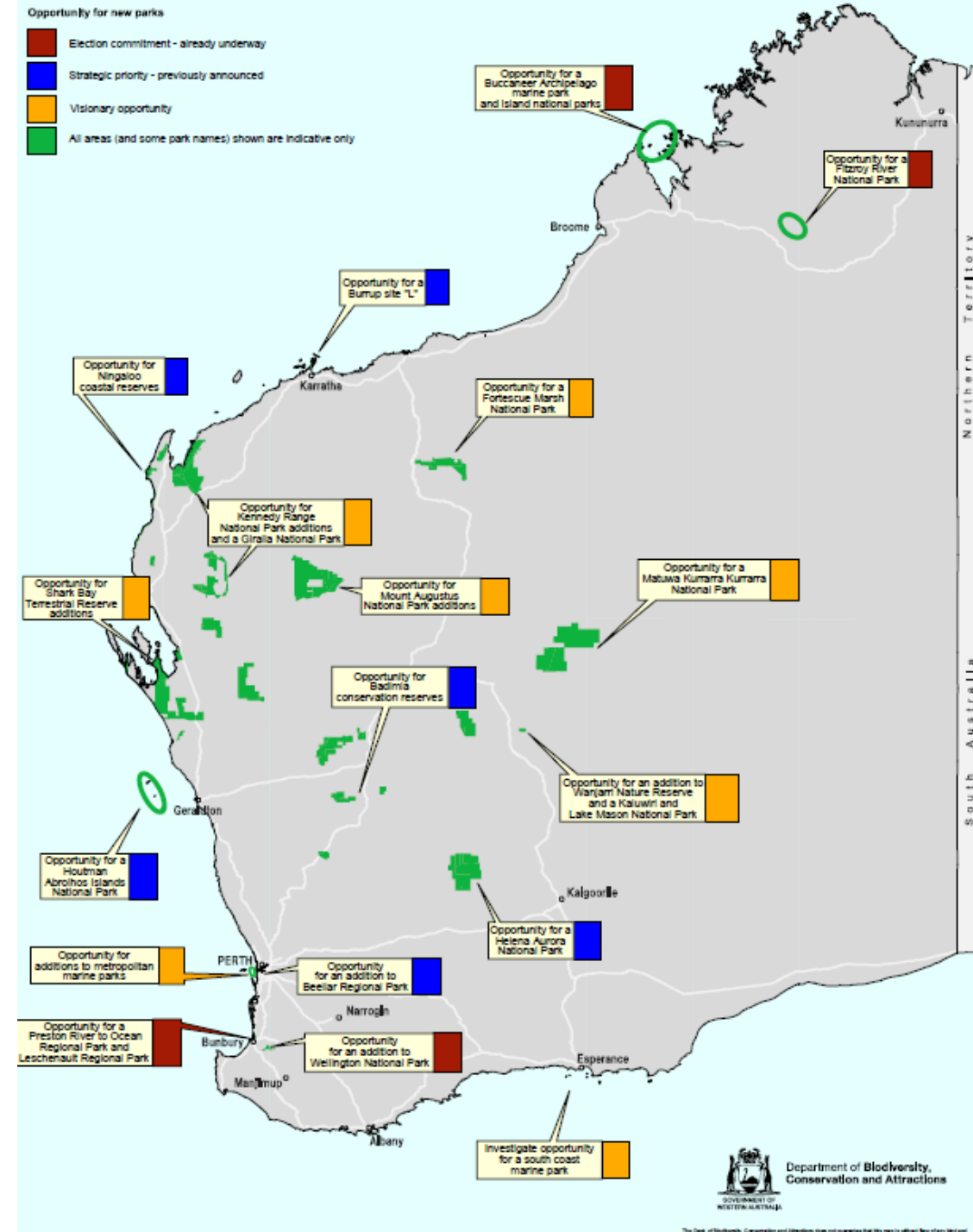
Existing joint management partnerships:

- Miriuwung and Gajerrong
- Balangarra
- Dambimangari
- Bunuba
- Yawuru
- Karajarri
- Nyangumarta
- Nyangumarta-Karajarri
- Ngarla
- Murujuga
- Gnulli



PLAN FOR OUR PARKS

SECURING 5 MILLION HECTARES OVER 5 YEARS



Cooperative and Joint Management under the SWNT Settlement

- Central component of the SWNT Settlement.
- Covers **3.8 million** hectares of conservation estate (almost 20% of Settlement area)
- Builds on increased Government of joint management agreements across the State.
- Embeds joint decision making over the management of conservation estate



Cooperative and Joint Management under the SWNT Settlement

- Two tiered structure
 - Claim wide advisory body (***Cooperative Management Committees***) to provide advice on Parks and Wildlife issues across each claim
 - One park/reserve specific ‘formal **Joint Management Body**’ under provisions of CALM Act for each claim group within the first five years, and a further joint management body within the next five years



Cooperative Management Committees:

Region-wide advice

Role:

- Identify formal joint management areas
- Advise on management plans and Aboriginal heritage issues
- Policy advice
- Advise on Aboriginal customary activities
- Advise on Aboriginal employment and economic development initiatives
- Review opportunities for Noongar participation in contracting and other economic development activities

Joint Management Body: Detailed Park Specific Advice

Role:

- Make management decisions for the park/reserve
- Assist in preparation of policies, programs and other management instruments for the park/reserve
- Monitor implementation of the management plan and role in amendments to management plan
- Approve annual works programs and budgets

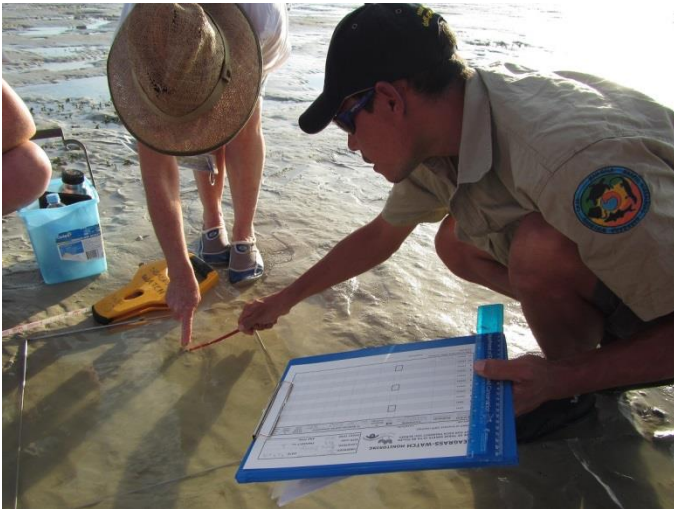
Training and Joint Management Operations



Joint Management Operations



- Fauna and flora research and monitoring.



Joint Management Operations

- Fire Management- Wildfire Suppression and Prescribed Burns.



Joint Management Operations

- On Country trips:
 - Knowledge sharing / Management planning









Culture in the Parks



Thank you

Simon Choo
Coordinator (Native Title)