



RIVERCARE ACTION PEEL HARVEY CATCHMENT

ALEX HAMS

Rivercare Officer

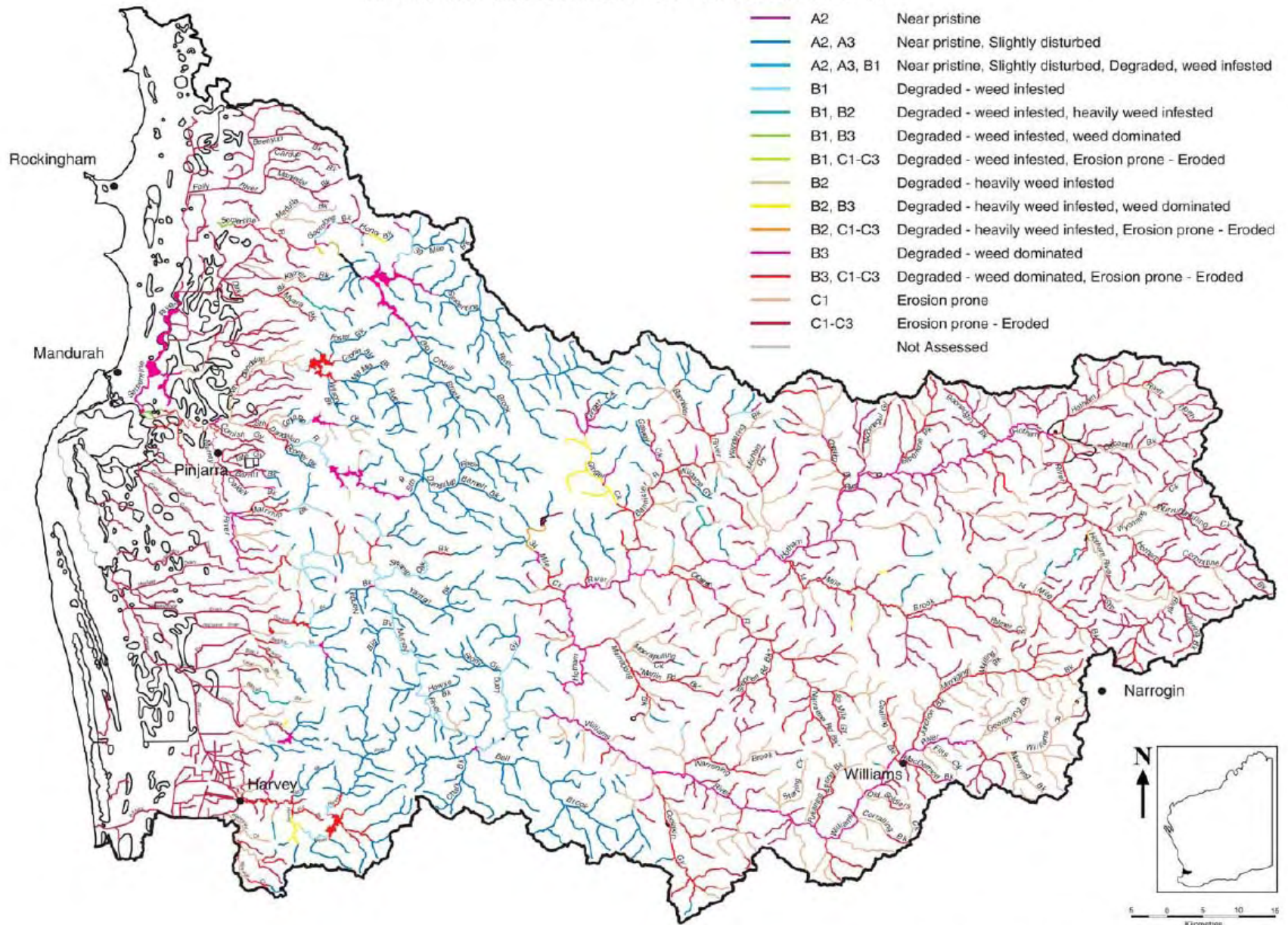
Peel-Harvey Catchment Council



FIGURE 10. SUB-CATCHMENT AREAS



FIGURE 21. STATE OF THE RIVERS



Source: Adapted from Hamilton (2002)

Projects

- Murray River Bank Protection
- Murray River Action Plan
- Rivercare Incentive Grants Program
 - Revegetation
 - Fencing
 - Stock Crossings
 - Weed Control
- Rivercare Training
 - 5 Day River Restoration Workshop, May 06
 - 1 Day Workshops on Specific Topics

Murray River Bank Protection

- 2km of baffle boards installed
 - 3 sites completed, 1 to go
- Sedges and rushes planted
 - 6000 planted, 14,000 to go
- Sand bags placed on banks
- Revegetation
 - 33,800 seedlings planted
- Fencing
 - 3.4km of Murray River Fenced

Signage at Murray River Foreshore Reserve

Murray River Restoration Project



The Murray River Restoration Project was initiated in 2003 by the Peel-Harvey Catchment Council and the Government of Western Australia. The project is a collaborative effort between the Peel-Harvey Catchment Council, the Government of Western Australia, and the Department of Planning and Infrastructure. The project aims to improve the water quality and ecological health of the Murray River, which is a vital water source for the Peel-Harvey region. The project includes the construction of a dam structure to improve water quality and the planting of native vegetation to improve the riverbank habitat. The project is a collaborative effort between the Peel-Harvey Catchment Council, the Government of Western Australia, and the Department of Planning and Infrastructure.

The aim of the project is to provide the best of the available water quality and ecological health of the Murray River. The project is a collaborative effort between the Peel-Harvey Catchment Council, the Government of Western Australia, and the Department of Planning and Infrastructure. The project includes the construction of a dam structure to improve water quality and the planting of native vegetation to improve the riverbank habitat. The project is a collaborative effort between the Peel-Harvey Catchment Council, the Government of Western Australia, and the Department of Planning and Infrastructure.

It is also important that the Murray River is kept clean and free from litter. Please do not litter and please do not smoke. Please do not drink the water. Please do not feed the animals. Please do not enter the water. Please do not enter the water. Please do not enter the water.

Where the Dandelup meets the Murray. One of the beautiful sights in the Murray River Restoration Project area.





17 10 2005

















Murray River Action Plan

- Covers the Murray River from Delta to Pinjarra
- Plan has been in place since early 2005
- Highlights areas that need protecting
- Work on Bank Protection Project has been targeted through the plans priorities
- Extension of the Action Plan to reach scarp in 2007



River Action Plan
Study Area



River
Action
Plan
Area

Extended River
Action Plan Area

Rivercare Incentive Grants Program

- \$135,000 allocated to 30 projects in the Murray, Serpentine, Hotham and Williams Catchments covering more than 400ha
- All projects conducted by landholders and funding matched by cash and in-kind support
- Revegetation
 - More than 30,000 seedlings
- Fencing
 - 50km of fencing
- Stock Crossings
 - 8 environmentally sensitive stock crossings
- Weed Control
 - More than 50ha of weeds



















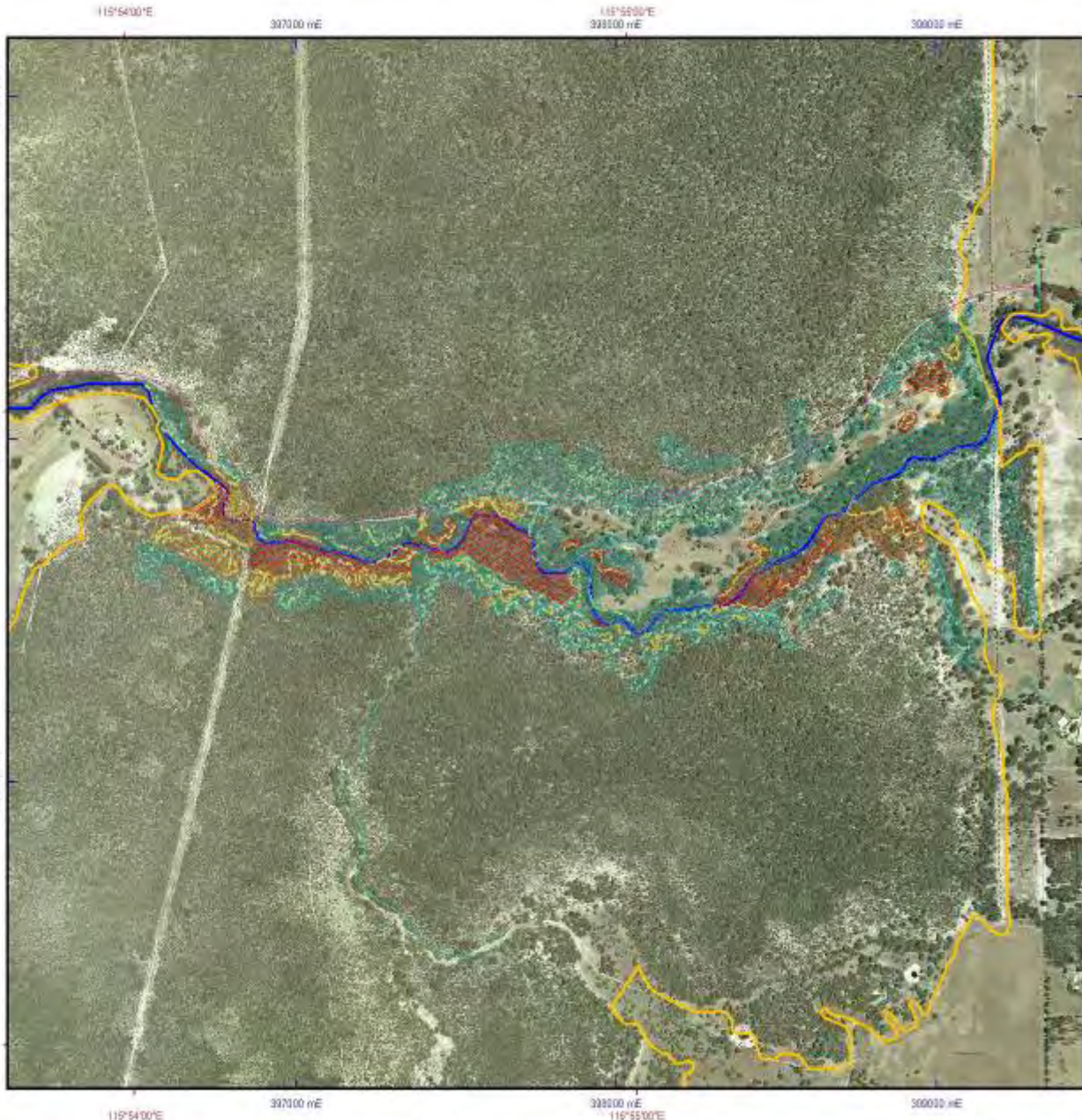




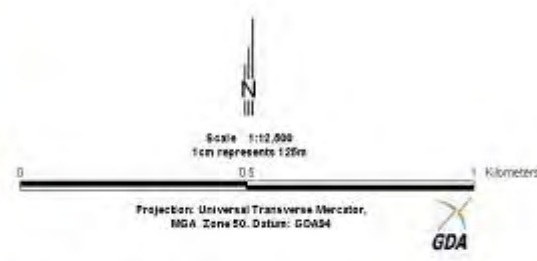


Lowlands - arum distribution 2005

- Legend**
-  Anum_less5per.shp
 -  Anum_5to75per2.shp
 -  Anum_more75per.shp
 -  Lowlands_arum05all.shp
 -  Lowlands1_tracks.shp
 -  Bush_forew01_config.shp
 -  Hydro_minor.shp
 -  Hydro_major.shp



842300 mN
842200 mN
842100 mN
842000 mN
841900 mN
841800 mN
841700 mN
841600 mN
841500 mN
841400 mN
841300 mN
841200 mN
841100 mN
841000 mN
840900 mN
840800 mN
840700 mN
840600 mN
840500 mN
840400 mN
840300 mN
840200 mN
840100 mN
840000 mN



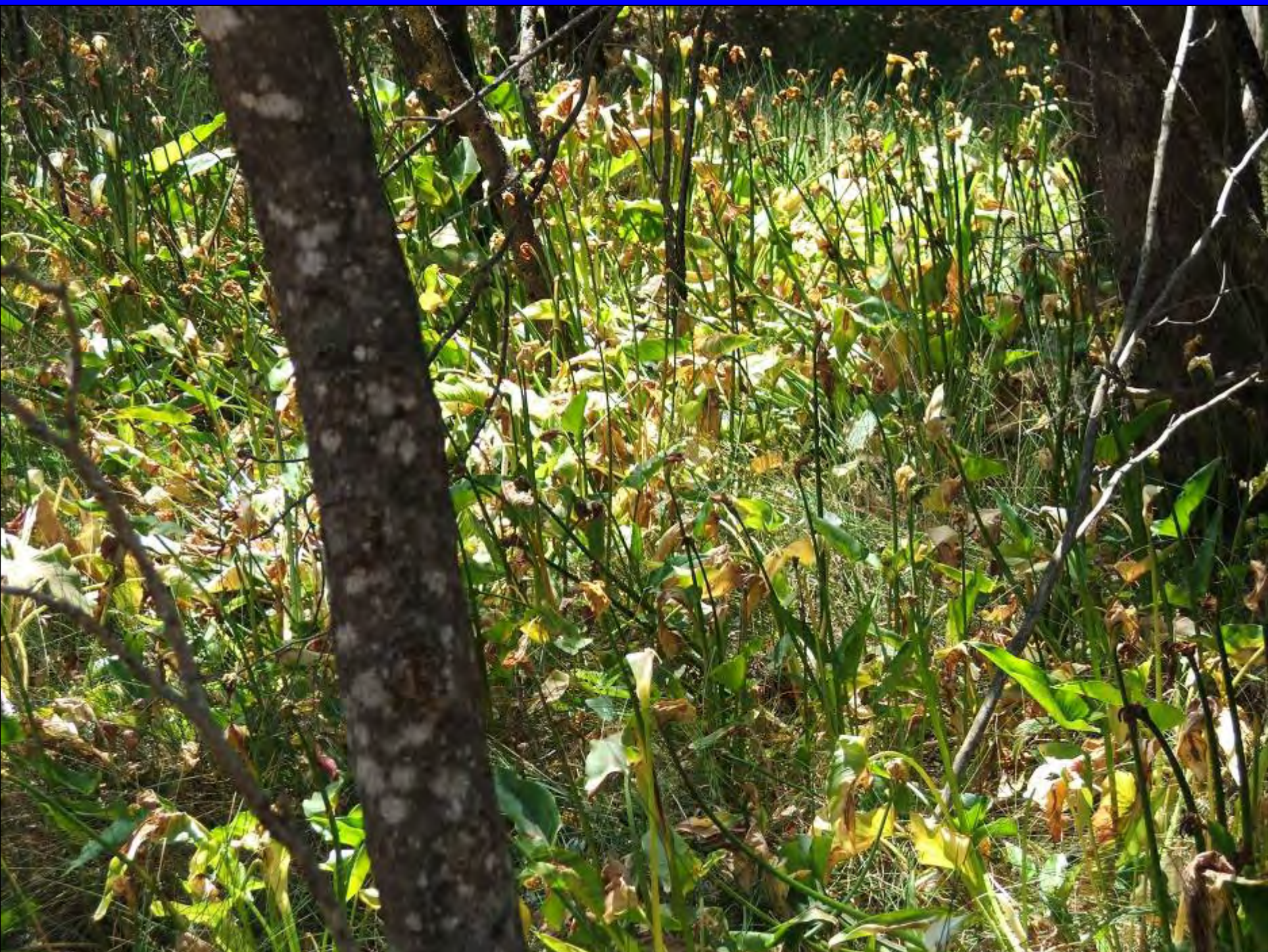
Produced Under the Direction of
Kieran McInnery Executive Director
Department of Conservation & Land Management

Gridscale shown at 1 minute intervals
Grid shown at 1000 metre intervals.

The Dept. of Conservation and Land Management does not guarantee that the map is a true and accurate
representation of the land, or that the information shown is correct or up-to-date. All users
are advised to check with the relevant authorities for the most up-to-date information.

Produced at 10:13 on November 18, 2005





Rivercare Training

- 5 Day River Restoration Workshop
 - 22nd to 26th May at Fairbridge
 - Covers all aspects of River Restoration
- 1 Day Workshops
 - River Rats Field Visit
 - River Action Planning
 - Planning and Implementing Projects
 - Engineering in River Restoration
 - Monitoring, 21st April
 - River Paddle, 21st June



Restoring our Rivers

Native vegetation
Native vegetation is essential for a healthy river. It provides shade, stabilizes banks, and filters pollutants. Planting native trees and shrubs along the riverbank can help restore the river's natural habitat.

Weeds
Weeds can choke a river and block the flow of water. They can also provide habitat for pests. Regular weeding is essential to maintain a healthy river.

Flow
Flow is essential for a healthy river. It keeps the river clean and oxygenated. Creating riffles and rock structures can help improve flow.

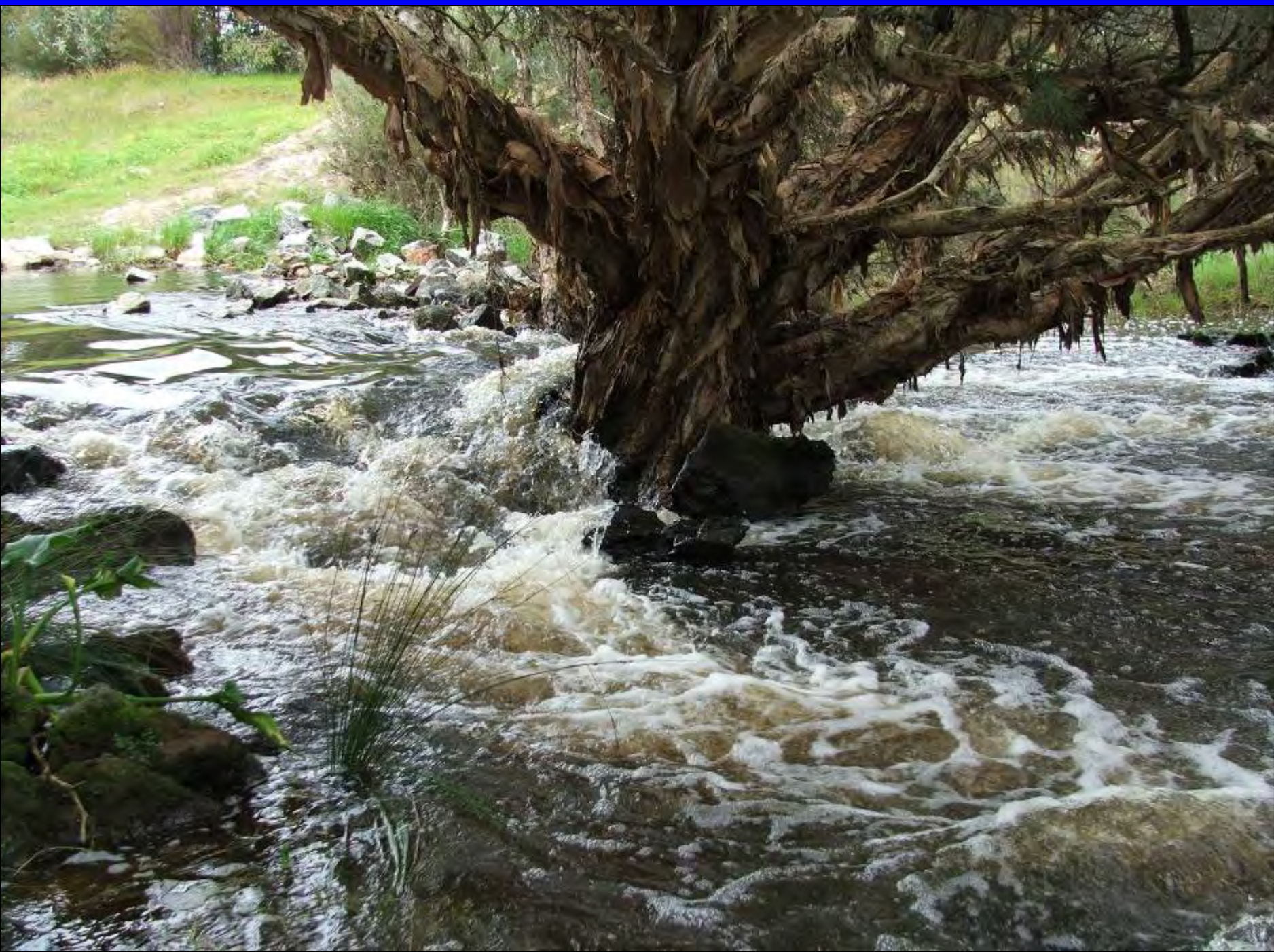






Partnerships

- Department of Environment
 - Murray River Bank Protection
 - Murray River Action Plan
- Landcare Centres
 - Rivercare Incentive Grants Program
 - Rivercare Training
- Shire of Murray
 - Murray River Bank Protection
- City of Mandurah
 - Serpentine River Foreshore Recovery Project
- Greening Australia River Recovery Project
 - New project, complimenting existing work
- Landholders and Community Members
 - Assistance with incentive projects and community based projects
- Aboriginal Consultation
- Work for the Dole and Green Corps.



HARVEY RIVER RESTORATION TASKFORCE INC.



RIVER RESTORATION IN THE HARVEY RIVER BASIN

Jesse Steele

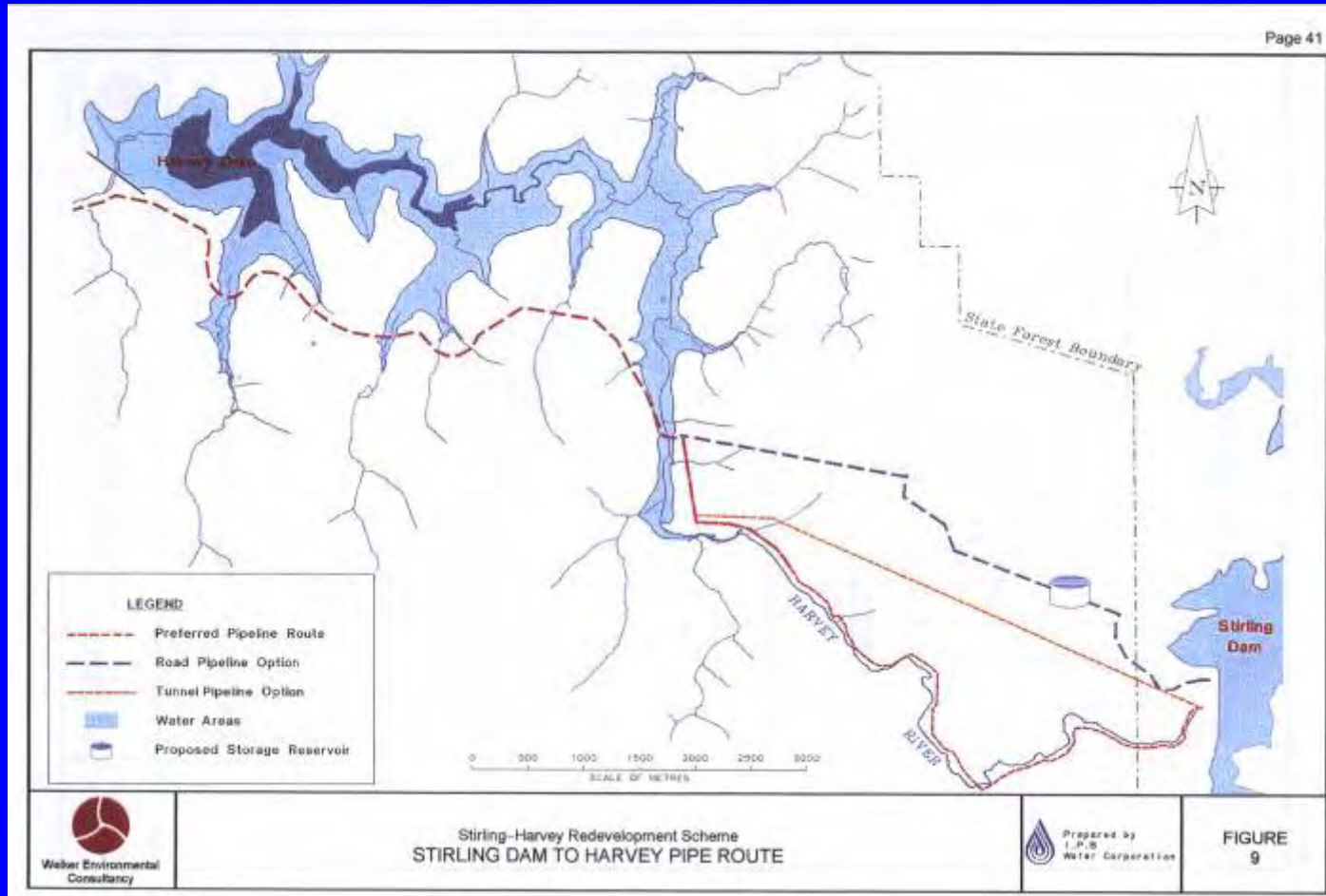
HRRT Rivercare Officer



WHY WAS THE TASKFORCE ESTABLISHED ?

- Established in 2001 as a condition of building the Harvey Dam to:
“restore and protect riparian values in the Harvey river basin”.
- Taskforce funds are overseen by a community panel of 14 members including representation from Local Government, DoE, Water Corporation, Harvey Water, LCDC’s and community.
- A large consultation process produced a strategic document that identifies 6 key priority areas.

HARVEY DAM CONSTRUCTION

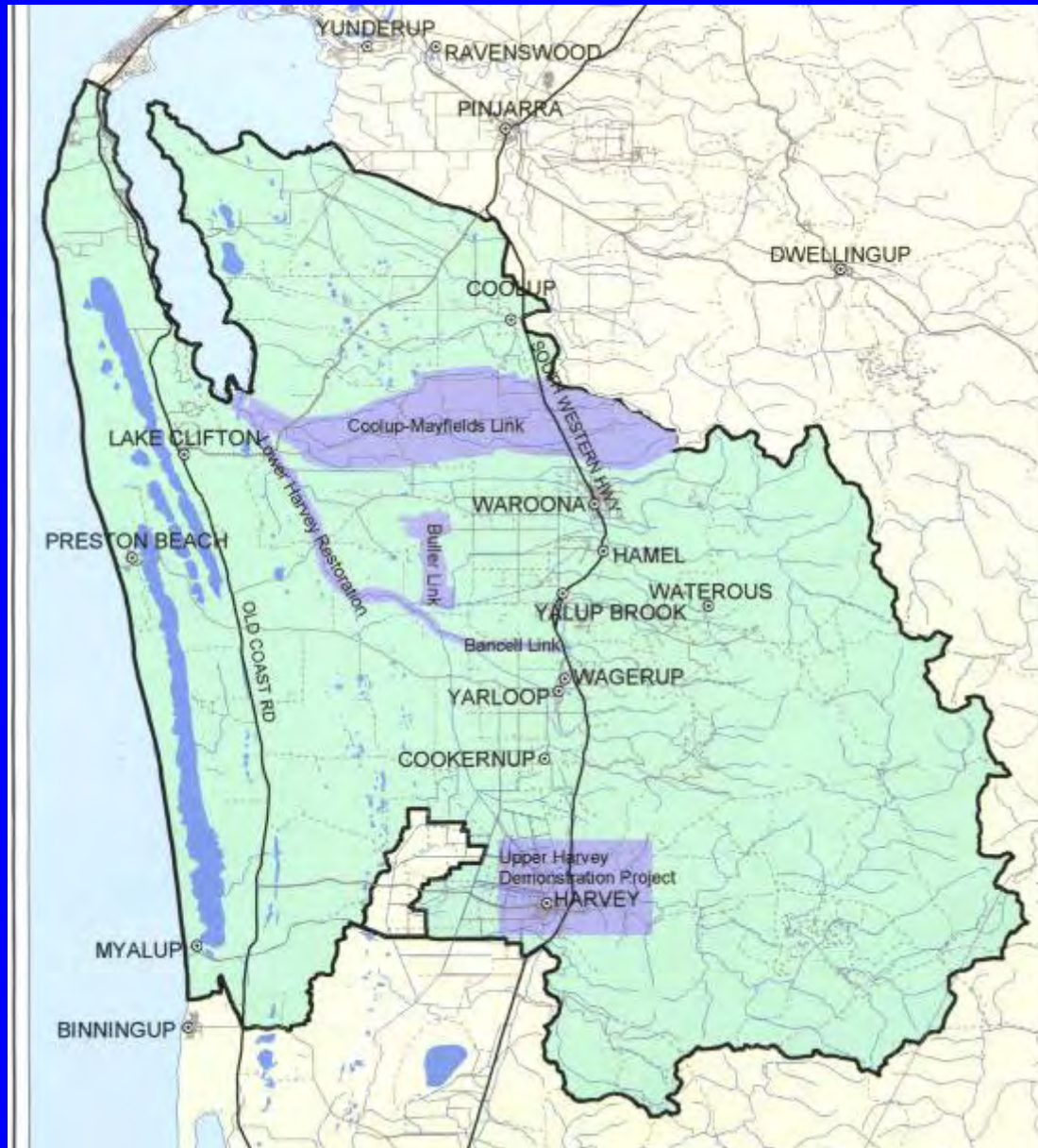


The impetus for the Taskforce came from WRC report “WRP 14” (1999) which stated that: “Ecological values lost due to the Harvey dam should be regained in other areas of the basin”.

FUNDING

- Taskforce commenced with \$750,000 from Water Corporation to be invested on-ground over ten years.
- NHT Priority Project Funding 2003/04 (\$227,000) and 2004/05 (\$132,895)
- \$365,000 SWCC Project Funding 2005/2006

HRRT PROJECT MAP



KEY PROJECTS: HARVEY







HARVEY RIVER RESTORATION TRUST

Restoring ecological and environmental values in the Harvey Catchment

HARVEY RIVER RESTORATION TRUST



The Harvey River Restoration Trust was established in 2005 to protect and restore riparian values in the Harvey Catchment. The Trust commenced with an investment from Water Corporation to be used for river restoration activities over the next 5 to 10 years.

Around Harvey there are 3 key communities:

- River Road
- Gibbs Point Cottage
- Stringybark



River Road Restoration

This river restoration site is an example of what can be achieved when local people adopt a stretch of river.

Although this section of the Harvey River has become degraded due to the invasion of weeds, reduced water flow and general neglect, this site shows how a little hard work can re-establish the balance.



COMMUNITY PROJECTS

- **Provision of financial incentives to:**
- Streamlining, e.g. fencing of creeks or drains
- Creating fauna/flora habitat, e.g. weed control and revegetation
- Linking waterways and remnant vegetation
- Off-stream watering points
- Stock crossings



BANCELL BROOK, YARLOOP

- Bancell Brook is one of the few unregulated streams in the Harvey Catchment
- Provides a carbon flow from forested uplands, but also allows upstream fish migration
- It is an important habitat for native fish (Spotted Minnow, Pigmy Perch)
- Barriers exist within the brook, specifically around road culverts and structures associated irrigation 'slot boards'









UWA RESEARCH PROJECT: LOWER HARVEY RIVER



PROJECT OUTCOMES

- \$35,500 community project funding delivered with 16Ha restored and 16,500 seedlings planting
- Strategic project funding has restored over 20Ha of riparian land, with 28,500 seedlings planted and involved approximately 250 volunteers